

ABSTRACT

We describe a continuous culture system related to the turbidostat, but using a feedback system based on biomass estimation from the dielectric permittivity of the cell suspension rather than its optical density. It is shown that this system provides an excellent method of maintaining a constant biomass level within a fermentor. The computer-controlled system was able to effect the essentially continuous registration of growth rate by monitoring the rate of medium addition via the time-dependent activity of the pump. At some biomass setpoints for aerobically grown cultures of baker's yeast substantial time-dependent fluctuations in the growth rate of the culture were thereby observed. At some biomass setpoints, however, or under anaerobic conditions, or when using a non-Crabtree yeast, the growth rate was constant, indicating that the fluctuations were inherent to the biological system and not simply a property of the fermentor and control system. A variety of time series analyses (Fourier transformations, Hurst and Lyapunov exponents, the determination of embedding dimension, and nonlinear time series predictions based on the methodology of Sugihara and May) were used to demonstrate, for the first time, that as well as stochastic and periodic components these fluctuations exhibited deterministic chaos. "Trivial predictors" were unable to give accurate predictions of the growth rate in these cultures. The growth rate fluctuations were studied further by means of offline measurements of changes in percentage viability, bud count, and in the external ethanol and glucose concentrations; these data and other evidence suggested that the growth rate fluctuations were closely linked to the primary respiration-fermentative metabolism of this organism. The identification of chaotic growth rates in cell cultures suggests that there may be novel methods for controlling the growth of such cultures.

INTRODUCTION

In general one may distinguish two types of continuous cell culture, the chemostat and the turbidostat (Anderson, 1956; Tempest, 1970). In the chemostat the dilution rate is fixed by the experimenter (and equal to the growth rate), and the medium is designed such that growth is nutrient-limited (Monod, 1950; Novick and Szilard, 1950; Herbert, 1958; Novick, 1958). By contrast, in the turbidostat the medium is designed to be rich in all nutrients (*sensu lato*), growth is not nutrient-limited and the growth rate is the maximum growth rate of which the organism is capable under the prevailing conditions; to effect this, the biomass level is constantly monitored, and only when it exceeds the setpoint is fresh growth medium pumped in, i.e. there is a feed-back loop (Munson, 1970).

The turbidostatic growth regime has the advantage that the volumetric productivity in biomass terms is higher than for any other culture regime, the culture is stable at dilution rates approaching μ_{\max} (Watson, 1972), and, of particular importance for the production of improved strains, the selection pressures in the turbidostat are very high (Bryson and Szybalski, 1952; Fraleigh *et al.*, 1989). Usually selection will be for the organism that will grow at the fastest rate in the conditions provided (as the cells with slower growth rates will tend to be washed out of the fermentor before they divide), but conditions can be envisaged whereby other selection pressures could be imposed. Since the turbidostat is by its very nature a self-stabilising system it is possible to use it to select for organisms capable of improved growth rate in the presence of a toxic substance (Aarnio *et al.*, 1991; see also Brown and Oliver, 1982, Kell & Salter 1995).

Despite the advantages offered by a turbidostatically controlled fermentation, the method remains under-exploited in microbial physiology, with the less-stable chemostat being the more widely used option. There are several problems associated with turbidostatic control that may in part account for this (Martin and Hempfling, 1976). In conventional turbidostats, as the name suggests, the biomass estimation for feed-back control is determined by turbidity (optical density) measurements (Myers and Clark, 1944). There are several disadvantages associated with optical biomass measurement (see e.g. Harris and Kell, 1985; Kell *et al.* 1990,

Sonnleitner *et al.*, 1992, Junker *et al.* 1994), the most important of which are that optical density is linear with biomass only over a very narrow range of low biomass concentrations, such that for most organisms the O.D. fails to be linear at concentrations well below those at which they would be of industrial interest. In addition such measurements are prone to sensor fouling by the microorganisms that they attempt to measure, due to biofilm formation on the relevant optical surfaces (Anderson, 1953; Northrop, 1954; Watson, 1969). A third problem with turbidity measurements is that it is not only *biomass* that is measured, since *necromass*, particulate solids and gas bubbles will all contribute to the optical density to some extent. For these reasons novel methods for the on-line and real-time measurement of the biomass content of industrial fermentations have long been an area of interest (Harris and Kell, 1985; Clarke *et al.* 1986; Kell *et al.*, 1990; Sonnleitner *et al.*, 1992).

An instrument that monitors biomass *via* the radio-frequency electrical capacitance of the cell suspension has been developed (and commercialised by Aber Instruments Ltd., Science Park, Cefn Llan, Aberystwyth, SY23 3AH, U.K. as the Biomass Monitor; (see e.g. Harris *et al.*, 1987; Kell *et al.*, 1987,1990; Davey, 1993a,b)). Continuous cultures in which the biomass is set by the Biomass Monitor have been called "permittistats" because the biomass is kept at a constant level by a feedback mechanism based on the dielectric permittivity of the suspension, and this approach has previously been used with great success for controlling anaerobic yeast cultures (Markx *et al.*, 1991a).

Continuous culture methods are frequently used for studying "steady-state" microbial growth, although fluctuations in NADH levels and the respiration rate of bacteria (Degn and Harrison, 1969; Harrison, 1970) and of various metabolic intermediates and fermentation parameters in cultures of yeast (Satroutdinov *et al.*, 1992; Ölz *et al.*, 1993) have been reported in these systems, and numerous studies have shown that the restricted (Rieger *et al.* 1983; Sonnleitner and Käppeli, 1986) respiro-fermentative *metabolism* of baker's yeast is capable of oscillations (Porro *et al.*, 1988; Richard *et al.*, 1994) and indeed chaos (Markus *et al.* 1985). Oscillations in the biomass content of yeast in a chemostat have been reported (Strässle *et al.*, 1988, 1989; Chen *et al.*, 1990a,b; Münch *et al.*, 1992; Auberson *et al.*, 1993), although of course the overall growth rate of such cultures remains constant, whilst (possibly entrained)

growth rate oscillations were also recently observed in fed-batch cultures of a recombinant strain of *Escherichia coli* (Ye *et al.* 1994). In contrast to the chemostat, however, the turbidostat-type continuous culture described herein permits the direct observation of fluctuations in the growth rate of the culture. It was therefore of interest to determine whether oscillatory behaviour could be observed in the growth rate of a continuous culture and whether the control strategy offered by the Biomass Monitor would provide a suitable means for its study. During the permissively controlled fermentations described herein, we indeed observed substantial oscillations in the growth rate of the yeast cultures and showed that at certain biomass set-points these fluctuations contained periodic, stochastic and deterministically chaotic components. Whilst the detailed origin of the observed oscillations could not be accounted for in full, they do appear to be linked to the central metabolic pathways of the cell.

THEORETICAL BASIS OF THE DIELECTRIC ESTIMATION OF BIOMASS

When an electric field is applied to an ionic solution the ions in that solution are forced to move. The positively charged ions are pushed in the direction of the field while the negatively charged ions are pushed in the opposite direction. However, if cells are present in the ionic solution then many of the ions both inside and outside of the cells can move only so far before they meet the cell's plasma membranes and are prevented from moving any further. The result of this is that there develops a charge separation or polarisation at the poles of the cells. The extent of the field-induced charge separations is measured by the capacitance (in Farads, F) of the suspension. As the volume fraction of cells increases the amount of membranes polarised increases and so the capacitance of the suspension increases. Thus by the measurement of the capacitance of the suspension, one can monitor its biomass content (Harris *et al.* 1987; Kell *et al.* 1990, Davey, 1993a,b).

By reversing the field direction the polarity of the charge separations is reversed, but the magnitude (and hence the capacitance of the suspension) remains unchanged. One can, of course, also change the *rate* at which the field changes direction, i.e. its frequency (in Hz).

Frequency has a marked effect on the capacitance of a cell suspension, because a finite time is required for the charge separations to be induced (Pethig, 1979; Foster and Schwan, 1986; Pethig and Kell, 1987). Figure 1 shows diagrammatically how the capacitance of a typical cell suspension changes with frequency. At low frequencies (**A**) many ions have time to reach the plasma membranes and polarise them before the field changes direction and moves the ions the opposite way. Thus the capacitance of the cell suspension is high. At higher frequencies (**B**) fewer ions have time to reach the membranes and so the extent of the induced transmembrane polarisation is less and the capacitance of the suspension is also lower. At very high frequencies (**C**) very few ions have time to move to and polarise the membranes before the field changes direction, and so the induced membrane polarisation is very small. At these frequencies the cell's contribution to the capacitance of the suspension is very small and one just measures the background capacitance of the medium (which is mainly due to water dipoles). Thus the capacitance of the suspension (**D**) goes from a high-capacitance plateau at low frequencies (maximal cell polarisation) to a low-capacitance plateau at high frequencies (minimal cell polarisation). This fall in capacitance of a suspension due to the loss of induced membrane polarisation with increasing frequency is called the β -dispersion (Pethig, 1979; Foster and Schwan, 1986; Pethig and Kell, 1987; Davey and Kell, 1994). The residual high frequency capacitance due to the medium is called C_∞ and the height of the low-frequency plateau above this is the ΔC (capacitance increment) of the β -dispersion. The frequency at which the fall in capacitance is half completed (i.e. the frequency when capacitance equals $C_\infty + (\Delta C / 2)$) is called the critical frequency (f_c). The Cole-Cole α is related to the steepness of the fall in capacitance with increasing frequency (see later), whilst the capacitance C and permittivity ϵ at any given frequency are related by the formula $CK = \epsilon \epsilon_r$, where ϵ_r is the permittivity of free space ($= 8.854 \cdot 10^{-12} \text{ F.m}^{-1}$) and K is a so-called cell constant with the dimensions length^{-1} (see e.g. Kell 1987).

As one is aiming to measure the biomass content of a cell suspension, one needs to see what effect this has on the β -dispersion curve shown in Figure 1. Figure 2 shows the β -dispersion of hypothetical cell suspensions with different biomass contents. The figure shows that the f_c is not changed by the biomass content, nor is C_∞ . What does change as a function of biomass content is the magnitude of ΔC , which increases with the biomass. Thus

the problem of measuring the biomass content of a cell suspension reduces to one of measuring the magnitude of the ΔC of the β -dispersion .

As mentioned above, one of the problems associated with using optical density for the control of continuous cultures is that dead cells, gas bubbles and non-biomass solids all interfere with the measurements so their effects on the dielectric method of biomass estimation must be considered. If the cells in a suspension have badly ruptured plasma membranes then the ions in the solution just move through the holes in the membranes and fail to cause polarisation of the membranes even at low frequencies. Thus dead cells do not normally have a significant β -dispersion. If one uses the ΔC of the β -dispersion rather than the more conventional turbidity measurements to measure the biomass content of a fermentor one can expect to measure only cells with intact plasma membranes (i.e. living cells) as opposed to ruptured (dead) cells (Stoicheva *et al.*, 1989; Salter and Kell, 1992; Davey *et al.*, 1993).

If non-biomass solids, oil droplets or gas bubbles are present in the medium then their effect on the ΔC of the β -dispersion must be considered. The ions in a growth medium either travel straight through the non-biomass material if it is permeable to ions or just move round it if it is not. In neither case are significant charge polarisations induced (since there are no plasma membranes) and so these materials will not tend to produce a significant ΔC term. Thus non-biomass materials are not expected to contribute significantly to the ΔC of the β -dispersion in a real fermentation medium, nor to the feedback signal used to maintain constant biomass.

Turbidity measurements often fail as a result of sensor fouling; with the Biomass Monitor this problem can be solved by use of electrolytic cleaning pulses which may be applied to the electrodes *in situ*. It should also be noted that under certain circumstances the electrodes themselves can display a substantial, and frequency-dependent capacitance; artefacts of this type are minimised by using a 4-terminal electrode system (Kell, 1987).

It was stated earlier that the biomass measurement problem reduces to one of the estimation of the ΔC of the β -dispersion. Thus one needs a convenient means of measuring ΔC

during a fermentation. There are two ways of achieving this. Figure 1 showed a β -dispersion and marked on it were two spot frequencies labelled f-low and f-high. The capacitance at f-high is approximately equal to C_∞ whilst that at f-low approximately equals $(C_\infty + \Delta C)$. Thus one can see that if one measures the capacitance at f-high and f-low "simultaneously" (or more practically in rapid succession), and then subtracts the capacitance at f-high (C_∞) from that at f-low ($\Delta C + C_\infty$) one gets ΔC , and thus a measure of biomass concentration. This is the principle of dual-frequency biomass measurements. The second method of estimating ΔC , and hence biomass concentration, uses the capacitance at f-low alone. At zero biomass concentration the capacitance at f-low equals C_∞ (see Figure 2); thus one can measure the capacitance of the medium at f-low prior to inoculation and then back off this capacitance to zero (i.e. set C_∞ to zero). This means that any change in capacitance at f-low during a fermentation must reflect changes in ΔC and hence biomass concentration. For the present work dual-frequency measurements were used throughout as these may be expected to be more stable to long-term instrumental drift (Davey, 1993a) which may occur within the time scale (typically 2 months) of the continuous culture fermentations that were carried out (since any changes that may occur will tend to affect measurements at both frequencies to a similar degree).

Dual- and single-frequency measurements using a Biomass Monitor (BM) have been successfully used to monitor the biomass concentrations in a variety of systems (Kell *et al.*, 1987). These include bacterial and yeast cultures (e.g. Harris *et al.*, 1987; Boulton *et al.*, 1989; Ferris *et al.*, 1990; Austin *et al.*, 1994), bacterial biofilms (Markx and Kell, 1990), cultured cells (Markx *et al.*, 1991c,d, Cerckel *et al.* 1993, Degouys *et al.* 1993), human blood (Beving *et al.*, 1994), immobilised cells (Salter *et al.*, 1990) and filamentous cells in liquid and solid substrate fermentations (Davey *et al.*, 1991; Penaloza *et al.*, 1991, 1992; Fehrenbach *et al.*, 1992). Using a different instrument Mishima and colleagues (Mishima *et al.*, 1991a,b) have made 2-terminal capacitance measurements as an attempted method for biomass estimation.

MATERIALS AND METHODS

A yeast clone was isolated from dried bakers yeast by repeated streaking onto agar, followed by growth in broth. The medium used was YPG which contained (all w/v): glucose (BDH) 5%, yeast extract (Oxoid) 0.5% and bacteriological peptone (Oxoid) 0.5%. The pH was set at 4.5 prior to autoclaving for 15 minutes at 121°C. Solid plates were prepared by adding 1.5% Lab M agar to the same medium save that the pH was set to 5.0. Plates and broth cultures were incubated at 30°C.

For permittistatic culture the yeast were grown in a 1 litre fermentor (LH Engineering) with a working volume of 750 ml. The top of the fermentor was adapted to allow the insertion of the Biomass Monitor's probe (standard 25 mm probe, cell constant 1.18 cm⁻¹). The temperature was controlled at 30°C with a LH-503 temperature controller and the pH was controlled at 4.5 with a LH-505 pH controller using 2M KOH and 2M HCl. The culture was run under ambient lighting conditions. Filtered and wetted air was pumped through the fermentor at a rate of approximately 1.5 volumes.min⁻¹, and the contents of the fermentor were stirred at 450 rev.min⁻¹. The Biomass Monitor was interfaced, *via* a set of amplifiers, to a 386SX IBM-compatible computer containing a DT2811-PGH 12-bit analog/digital I/O board (Data Translation Ltd. Wokingham, Berkshire, U.K.).

A program (PERMSTAT.EXE) was designed and written in-house in Microsoft QuickBASIC v4.5 for monitoring and control of the biomass content of the fermentor. In brief, the program set the measuring frequencies (0.4 MHz and 9.5 MHz) on the Biomass Monitor, read back the resulting capacitances, calculated the difference between the capacitances (ΔC), and switched the medium pump on and off appropriately to control the biomass level. At user-defined intervals the capacitance and conductance of the suspension at each frequency were recorded to a file. The volume of medium required to control the biomass was also recorded on an hourly basis. Since the dilution rate is equal to the specific growth rate, and the dilution rate (in h⁻¹) is equal to the volume of medium pumped per hour divided by the working volume, and the biomass is controlled at a constant level, the volume of medium pumped per hour gives a straightforward measure of both the growth rate and the specific growth rate. Finally, since the mixing time for a fermentor of this type (with an impellor turning at 450 rpm) and scale (< 1 litre) is a second or two (much quicker than typical probes respond, but comparable with the

time constant of the dielectric biomass probe), we did not resort to more complex control regimes such as PID (see also Markx & Kell 1995).

Samples were removed from the permittostat periodically for the determination of wet weight, dry weight, viability, budding index and ethanol and glucose concentrations as described below. Off-line dielectric scans were also carried out as described below.

Wet and Dry Weight Measurements

A pre-weighed 25 mm diameter, 0.2 µm pore size, Whatman filter (WCN type, cellulose nitrate, plain white) was wetted with distilled water and placed under gentle vacuum. A sample (typically 5 ml) of the diluted cell suspension was then pipetted onto the filter and sucked "dry". The cell pellet was then washed with 1 ml of distilled water and again sucked "dry". The filter was then reweighed to give the wet weight of cells per millilitre. The filters and yeast were then dried using a Sartorius drying machine set at 80°C using the auto-shutoff feature which dries the sample until no further weight change is detected. Drying the yeast samples in this way took about 10 minutes.

Microscopy

Viability was estimated by staining the (dead) cells with methylene blue. The methylene blue stain was prepared as described previously (Stoicheva *et al*, 1989). To ascertain the viability of the sample the yeast suspension, methylene blue and fresh growth medium were combined in the ratio 1 : 4 : 40. The prepared samples were then examined immediately by light microscopy at a magnification of x400. Cells appearing deep blue were scored as dead while unstained cells and slightly coloured (grey) cells were scored as alive (Davey *et al*, 1993). At least 100 cells were scored for each sample and the percentage of viable cells was calculated. The percentage of cells with buds was determined by light microscopy by scoring at least 100 cells. The cells examined were either unstained or were the sample stained with methylene blue.

Determination of Ethanol and Glucose Concentrations

Samples for determination of ethanol concentration were placed into Eppendorf tubes and centrifuged at 13000 rpm for 5 minutes in an Eppendorf-type centrifuge. The supernatants were removed and frozen until the day of assay. Ethanol concentrations were then determined using Sigma Procedure 332-UV. This assay involves alcohol dehydrogenase (ADH) which catalyses the oxidation of alcohol to acetaldehyde with the simultaneous reduction of NAD to NADH, giving an increase in absorbance at 340 nm that is directly proportional to the concentration of alcohol in the sample. The thawed supernatants (diluted where appropriate) were added to the NAD-ADH single assay vials together with glycine buffer (pH 9) and incubated at room temperature for 10 minutes. The samples were then transferred to plastic cuvettes and their absorbance at 340 nm was measured *versus* a blank which contained distilled water in place of the supernatant. Samples of known ethanol concentration were measured in the same manner and the concentration of ethanol in the supernatants was determined.

Samples for determination of glucose concentration were centrifuged and stored as described for the ethanol determination above. Glucose concentration was then determined using Sigma Procedure number 510. This assay is based on the conversion of glucose to gluconic acid by glucose oxidase, a reaction that also produces hydrogen peroxide. The hydrogen peroxide then oxidises colourless *o*-dianisidine to the brown oxidised form. The intensity of the brown coloration after 45 minutes incubation at room temperature (which is proportional to the glucose concentration in the original sample) is then measured *versus* a blank at 450 nm. Samples of known glucose concentration were measured in the same manner and the concentration of glucose in the supernatants thereby determined.

Off-line Dielectric Measurements

Cell samples removed from the fermentor were placed into a "Mexican Hat" (Woodward and Kell, 1990) electrode attached to a Biomass Monitor. This type of electrode has been especially constructed to hold a volume of exactly 1 ml. The capacitance of the suspension was measured at 12 frequencies between 0.2 and 9.5 MHz evenly distributed on a logarithmic scale. For each cell suspension scanned a polarisation control was carried out by

adjusting its supernatant to the same conductance at 0.2 MHz as that of the cell suspension by the addition of KCl or distilled water (Davey *et al.*, 1990,1992).

RESULTS

Figure 3 shows the ΔC of a culture of baker's yeast during aerobic growth in permittistatic culture. The cells were initially grown as a batch culture (i.e. no medium inflow), and then at the point indicated by the arrow permittistatic control of the biomass level was initiated. It can be seen that the Biomass Monitor provided generally excellent control of the biomass level in the fermentor, in this case for a period in excess of two months. In other fermentor runs the setpoint was changed periodically across a range of capacitance values and with the exception of a few cases where too high a setpoint was chosen the new capacitance setpoint was achieved and well maintained (data not shown).

Permittistatic cultures of this type allow one to log the rate of medium inflow on a continuous basis and given the excellent control of the biomass concentration offered one might expect the volume of medium pumped into the fermentor per unit time either to be constant during permittistatic culture, or, possibly, to increase monotonically as faster-growing strains (or mutants) take over (Bungay *et al.*, 1981; Fraleigh *et al.*, 1989, 1990). However, as can be seen in Figure 4, which shows the pump activity during the permittistat run represented in Figure 3, this is not the case at all, since the pump rate (and hence the growth rate) exhibited dramatic time-dependent changes. Because the overall pattern could be seen by eye to vary rather significantly over the run, we analysed hours 200-600, 600-1000 and 1000-1400 separately. To establish the extent to which the oscillatory behaviour of the growth rate of this culture was in fact periodic the data were Fourier-analysed; the resulting power spectrum of the data for 1000-1400h from Fig 4C is shown in Figure 5. The power spectrum shows that whilst periodicities are present, they occur at many frequencies, though the data from 1000-1400h contain 2 major peaks (at frequencies of 0.0092 and 0.071 h⁻¹) representing underlying cycles of 108.7 and 14 hours duration. A minor diurnal peak (at 0.041 h⁻¹), and another minor peak at 0.023 h⁻¹ or 42.3 h may also be observed. All told, however, it is evident that the data are neither purely periodic nor purely stochastic (white noise), and might be considered to be

deterministically chaotic. Indeed, all of the peaks in Fig 5 except the (narrow) 108 hour one are broad, suggesting pseudoperiodicity rather than pure periodicity, as might be expected towards the onset of chaos.

Figure 6 shows the pump rate for a different permittistat run in which the setpoint was 4 pF. In this case no oscillations in the growth rate were observed. This important control shows that the growth rate fluctuations are of biological origin, and not simply a consequence of instability in the control system used (see also Locher *et al.* 1993b). The fact that prominent oscillations were observed at some setpoints but not at others, together with the changing growth rate seen in Figure 4, suggested the possibility that in some circumstances the pump rate (and thus culture growth rate) was indeed deterministically chaotic. The changing pattern of fluctuations within one fermentation and at one setpoint (Figs 4A-C) also suggest a high-degree of sensitivity to initial conditions, another known characteristic of chaotic processes. Whilst the time series presented in Figure 4 undoubtedly contains both periodic and stochastic elements it was of great interest to establish whether the time-dependent growth rate changes were also of a deterministically chaotic character, since chaotic growth rates have not previously been observed in any axenic microbial culture. Although at the margin the distinction is perhaps a little arbitrary, many methods have been suggested for distinguishing chaotic data sets from (coloured) noise (e.g. Grassberger and Procaccia, 1983; Farmer and Sidorowich, 1987; Lapedes and Farber, 1987; Casdagli 1989; Sugihara *et al.*, 1990; Sugihara and May, 1990, Kennel and Isabelle, 1992; Provenzale *et al.*, 1992; Stone, 1992; Theiler *et al.*, 1992; Tsonis and Elsner, 1992; Abarbanel *et al.*, 1993; Holton & May 1993, Rapp, 1993; Lloyd and Gravenor, 1994, Skinner, 1994; see also a useful collection of reprints in Ott *et al.* 1994). However there is little consensus as to which approaches are the most suitable, particularly when chaotic fluctuations may be present together with an unknown amount of genuine, stochastic behaviour (noise) within a single time series. For this reason further attempts to analyse the pump data for the whole permittistat run represented in Figures 3 and 4 were made using a battery of approaches, including calculation of the Hurst (1951; Peters 1991) and Lyapunov exponents (Wolf *et al.*, 1985) and of the embedding dimension (Petigen *et al.*, 1992; Kennel *et al.*, 1992), as well as by using the Sugihara-May (1990) nonlinear prediction method. An overview of these findings is provided in Table 1.

Positive first Lyapunov exponents of a nonlinear time series, which estimate the mean exponential divergence or convergence of nearby trajectories in phase space, are widely regarded as indicative of the presence of real dynamical chaos (Eckmann and Ruelle, 1985; Brown *et al.*, 1991; Wilson and Rand, 1993). Table 1 shows that as judged by this criterion, with the first Lyapunov exponent determined using the numerical method of Wolf *et al.* (1985), each of our time series would indeed be construed to be deterministically chaotic. The Hurst exponent (see Hurst 1951, Peters 1991) is another measure of the degree of randomness of a discrete time series, purely stochastic processes having a Hurst exponent of 0.5 whilst fully deterministic time series have a Hurst exponent of 1. It may again be observed (Table 1) that our data are characterised by Hurst exponents which are consistent with the view that they are in large measure deterministic.

Another persuasive set of approaches to deciding whether a given data series is deterministic or chaotic (rather than stochastic) are based on the idea that one should be better able to predict deterministically chaotic than stochastic time series. "Embedded" time series are frequently used with neural networks or other supervised learning algorithms to generate predictions (Weigend and Gershenfeld, 1994). The process of "embedding" as a means of illuminating the inner dynamics of chaotic time series was devised by Ruelle (1980), whilst Takens (1981) showed that, given a proper embedding, future values of a time series could be predicted to an arbitrary accuracy with an unstated smooth function. The process of embedding a single time series is as follows: the scalar series is converted to a vector $X_t = x_t, x_{d+t}, x_{2d+t}, x_{3d+t}, \dots, x_{(n-1)d+t}$, where d is the separation and n the embedding dimension. A supervised learning algorithm is then trained with pairs of data in which the vector is the input and the next datapoint, x_{nd+t+1} , the output. The question then is to calculate the optimum embedding dimension. We used the approach described by Kennel *et al.* (1992) (and see Abarbanel *et al.*, 1993) in which, broadly, the separation is found using the so-called auto-mutual information technique, in which 2 copies of the time series of interest have their mutual information calculated and the separation between the time series is increased by a single step at a time. The optimal separation is identified as the first minimum on a plot of auto-mutual information vs offset. The optimal embedding separations and dimensions are given in Table 1. For each

block of data (200-600h, 600-1000, 1000-1400 and 200-1400), the Sugihara-May (1990) algorithm was then used to generate one-step-ahead predictions with a training set of the first 80% and last 10% of each data block, the model so formed being tested on the datapoints between 80 and 90% of the way through the time series (in each case, the updated prediction was based on the previous true data points in the test data series). Fig 7(A,B) shows the actual and predicted data for the 80-90% segment of the entire dataset, and it may be observed both in Fig 7 and in Table 1 that the fits are remarkably good, fully consistent with the view that despite their rather stochastic appearance the data are in fact representative of a deterministically chaotic time series.

It is worth mentioning that given a *perfect* measure of embedding one would expect the dimension of the whole series to be the maximum one of that seen in the subsections (in contrast to what is shown in Table 1). The technique of false nearest neighbours works by finding points in the embedded series that appear to be close in n dimensions but are not close when a further dimension is added. An approximate measure of the radius of the attractor is formed and the definition of "close" is scaled accordingly. We then decide that we have sufficiently embedded the series when the percentage of false neighbours falls below a certain value. If the sections of series with higher dimension had some particularly 'knotty' portions, the algorithm will increase the dimension until they are resolved; if the attractor is more dense in those sections the definition of "close" would be more stringent and more false neighbours would be generated. When the whole series is considered, however, these knotty sections will be swamped, and a lower dimension estimate results.

Since it might be argued that a "trivial predictor" (in which the one-step-ahead prediction for time $t+1$ is simply the value at time t) would also give good predictions, Table 1 therefore additionally shows the correlation coefficients and RMS errors determined for both the 1st- and 2nd- order trivial predictor, where the 1st-order trivial predictor is that in which the prediction for a given data point is the actual value of the previous data point whilst the 2nd-order trivial predictor is that in which the value of data point $n+2$ is taken as that for point n plus twice the signed difference between points $n+1$ and n . Fig 7C shows the 1st-order trivial predictor for the same data as in Fig 7B. It may be observed from this and from Table 1

that the Sugihara-May predictions, and especially the RMS errors in all cases, are substantially better than those generated by any of the trivial predictors.

Further to check that our data were indeed chaotic, we also studied pure autoregressive models as a means of fitting our time series. That of order 6 gave the best predictions, but the correlation coefficient was very poor and the RMS error of predictions no better than that of the trivial predictors. Application of the Box-Pierce statistic (Box & Pierce 1970) showed that there were no significant autocorrelations in the residuals from the AR(6) model (data not shown), indicating that a linear model was incapable of giving adequate predictions for this time series.

Finally, further to bolster the view that we are indeed studying a deterministically chaotic process, we used the argument of Sugihara and May (1990) that the n-step-ahead prediction in a deterministically chaotic system is likely to get worse as n increases, but that for a purely stochastic system (white noise) it is likely to be essentially independent of n. Fig 7D shows that the correlation coefficient drops dramatically as n increases above 5. (Although the exact structure of the chaos obviously differed from run to run, it is worth mentioning that visually observable chaos was seen in 7 independent start-ups of a culture.)

Given what is known about the oscillatory behaviour of metabolic fluxes in yeast growing respiro-fermentatively (see above), it was assumed that our fluctuations were also related to the major respiro-fermentative pathways of metabolism. A plausible scenario suggests that glycolytic ethanogenesis leads to a build-up of toxic ethanol and/or acetaldehyde, due to the limited respiratory capacity of *S. cerevisiae* (Rieger *et al.*, 1983; Käppli, 1986; Sonneitner and Käppli, 1986; Alexander and Jeffries, 1990; Locher *et al.*, 1993a), which then inhibit glycolysis and growth (Ingram and Buttke, 1985; Jones and Greenfield, 1986; van Uden, 1989; Jones, 1990; Wills, 1990; Markx *et al.*, 1991b, Bruce *et al.* 1991, Alexandre *et al.* 1993). After a certain period, a combination of respiration, yeast acclimation, dilution (when medium begins to be added) and (possibly) evaporation removes the toxicity, and glycolysis and growth can then resume, producing more ethanol/acetaldehyde, and so on. Each of these metabolic processes is of course known to be nonlinear. Consistent

with this overall picture are the observations that neither *S. cerevisiae* growing anaerobically (Markx *et al.*, 1991a), nor the Crabtree-negative yeast *Kluyveromyces marxianus* growing aerobically (unpublished observations; data not shown), could be induced to produce any marked oscillations in growth rate. In an attempt to gain an understanding of the processes underlying the shorter of the two oscillations seen in Figure 4C, samples were removed from the permittistat approximately every two hours for a fifteen hour time period. The pump activity during that fifteen hour period of the study is shown in Figure 8A, and may be summarised as a ten hour period of medium input followed by a five hour period during which no input of medium occurred.

Figure 8B shows the percentage of budding cells present in the permittistat during this time. It can be seen that the percentage of cells with buds increases during the part of the oscillation in which medium input is occurring and decreases towards the initial level when medium input ceases. Also shown in Figure 8B are the data for the Cole-Cole α . The Cole-Cole α was calculated from the off-line dielectric scans of the yeast suspension (see Markx *et al.* 1991b) by fitting the data to the Cole-Cole equation (Cole and Cole, 1941):

$$\epsilon'_\omega = \frac{\Delta\epsilon' \left(\frac{f_c}{f} \right)^\alpha \sin \left(\frac{\alpha\pi}{2} \right)}{1 + 2 \left(\frac{f_c}{f} \right)^\alpha \cos \left(\frac{\alpha\pi}{2} \right) + \left(\frac{f_c}{f} \right)^{2\alpha}} + \epsilon'_\infty \quad \dots(1)$$

where ϵ'_ω is the permittivity of the suspension at a given frequency, ϵ'_∞ is the permittivity at a high frequency with respect to the β -dispersion, $\Delta\epsilon'$ is the dielectric increment of the β -dispersion, f is the frequency in Hertz, f_c is the critical frequency of the β -dispersion (see Figure 1), and α is the Cole-Cole α . GraFit v 2.0 (Erithacus Software Ltd., PO. Box 35, Staines U.K.) was used to fit the equation to each data set following the subtraction of its polarisation control (Davey *et al.*, 1992; Kell and Davey, 1992). Figure 7B shows that changes in the percentage of budding cells appears to be reflected in the curve for the Cole-Cole α ; although the mechanisms underlying the large Cole-Cole α values of biological systems are not well understood (Markx *et al.*, 1991b; Davey and Kell, 1994), they may indeed in part reflect morphological polydispersity.

Figure 8C shows the changes in glucose concentration occurring in the permittistat during the fluctuation. By comparison of this figure with Figure 8A it can be clearly seen that during the phase of the oscillation where medium is being pumped in to the fermentor the glucose concentration increases, before falling back towards the base level in the period when there is no pump activity. Figure 8D shows the changes in ethanol concentration over the same time period. In contrast to the glucose concentration, the ethanol concentration falls slightly as medium is pumped into the fermentor, and rises when medium input ceases. However *before* medium input restarts the ethanol concentration falls back to the initial level. Given the relatively low budding index, which shows that the population was highly polydisperse with respect to its growth (Kell *et al.*, 1991), it is likely that only a fraction of the population switches to growth on (or metabolism of) ethanol as the carbon source when the glucose concentration falls.

DISCUSSION

The measurement of biomass on-line and in real-time in fermentors is a necessity if turbidostatically controlled continuous cultures are to be used, and the development of sensing devices capable of this task has long been an area of interest (Harris and Kell, 1985; Clarke *et al.*, 1986; Kell *et al.*, 1990, Sonnleitner *et al.*, 1992). An ideal sensing device for measuring the biomass in a fermentor should be sensitive to changes in biomass, but be insensitive to both non-biomass solids and *necromass*. In addition the signal should be linear with biomass to high volume fractions. The dielectric system that we have described fulfils these criteria.

Much of microbial physiology is based on measurements made at "steady state" in continuous cultures, yet the oscillatory behaviour of microbes has been reported in continuous cultures by several groups (see e.g. Degn and Harrison, 1969; Harrison, 1970; Cunningham and Nisbet, 1983; Satroutdinov *et al.*, 1992; Ölz *et al.*, 1993). Steady state conditions are normally assumed to have been reached once a rather arbitrary five volume changes have elapsed following a change in dilution rate (but cf. Rutgers *et al.* 1987). In the permittistat cultures described, however, substantial fluctuations in growth rate may be apparent even after

50 volume changes have elapsed, though one may state that the Biomass Monitor has proved to be an effective tool not only for controlling the biomass level in continuous cultures but also for the induction of fluctuations in growth rate under these conditions. It is therefore desirable that one should be able properly to identify and characterise oscillatory and chaotic behaviour in continuous culture systems.

Whilst accepting that the presence of noise will tend to distort or obscure the characteristic patterns which are used in the identification of periodic and chaotic data sets, we applied a battery of analyses to the growth rate data observed. These included calculation of the Hurst and Lyapunov exponents, and of the embedding dimension, as well as by using the Sugihara-May (1990) nonlinear prediction method. In each case it was demonstrated that the time series contained periodic, deterministically chaotic and stochastic elements. Although with the hourly measurements of growth rate described herein, several months of experimentation yield a few thousand data points, we recognise that that although this number is much greater than those usually available in ecological time series, this is considered by some to be a rather small number for the reliable identification of chaotic behaviour (Ruelle, 1990). One possible approach to this problem is modelling of an appropriately parameterised and simplified version of the system in order to obtain virtually unlimited noise-free time series; while this has been done for cell-free extracts of yeast (Markus *et al.*, 1985) in the present case we cannot yet define a subsystem of appropriate simplicity and accuracy. However, the low dimensionality of the phase space embedding that we have used to generate successful predictions (Table 1) suggests that the dimensionality of the biochemical processes generating the chaotic behaviour is also very low.

The fact that the origins of the chaotic fluctuations lie in the biology and not in the dynamics of the pump system, etc., comes from 3 main lines of argument: (a) with the same organism and set-point but under *anaerobic* conditions there is no chaos (Markx & Kell 1991), (b) with the same organism under aerobic conditions but at a slightly different set-point there is no chaos, and (c) with a non-Crabtree yeast, *Kluyveromyces marxianus*, there is no chaos observed aerobically at any set-point tested. In each of these cases the pump system etc was the same as in the case where chaos *was* observed. These controls, which were explicitly

designed exactly to ensure that we were indeed observing chaos of biological origin, would seem to make it hard to argue that the chaos has an abiological origin under these circumstances.

Offline measurements of the macroscopic behaviour of the yeast culture have suggested a metabolic origin for the oscillations with a switch by some fraction of the population from growth on glucose to growth on ethanol (or indeed to mixotrophy). Oscillations in the concentration of NAD(P)H have been reported to be much more prolonged in yeast cells harvested from batch cultures at the point of switching from growth on glucose to growth on ethanol when compared to cells growing on either carbon source alone (Richard *et al.*, 1993).

While macroscopic measurements provide us with some insight to the observed oscillatory behaviour of the yeast cells, it is likely that the behaviour is in part linked to the heterogeneity of the population. Measurement of the properties of *individual* cells using techniques such as flow cytometry (see Kell *et al.*, 1991; Lloyd, 1993; Shapiro, 1994) can identify and quantify the heterogeneity present within nominally steady state cultures. One of the advantages offered by flow cytometry is that measurements can be made simultaneously on several different parameters of the cell. Recently flow cytometry has been used to determine the size, DNA content and the number of bud scars of individual cells in batch and continuous cultures of yeast (Münch *et al.*, 1992a,b), and such techniques will be of importance in determining to what extent differences between cells can be accounted for by their position within the cell cycle.

In conclusion, however, the ability to effect the permissive control of yeast cell cultures has allowed us for the first time both to induce and to demonstrate the periodic, stochastic and, most interestingly, the deterministically chaotic behaviour of the macroscopic growth rate of microbial cell cultures. Although chaotic behaviour has been widely reported at the metabolic, physiological and ecological levels in biological systems, we believe this to be the first demonstration of deterministically chaotic growth rates in an axenic biological system. Finally, a corollary of the identification of deterministically chaotic behaviour in the growth rate of biological cells is that novel methods for improving the control of such growth rates

may become available, both for raising and lowering them, since a number of authors (e.g. Ditto *et al.*, 1990; Ott *et al.*, 1990; Garfinkel *et al.*, 1992; Schiff *et al.* 1994, Skinner, 1994, and see Ott *et al.*, 1994) have indeed shown how a knowledge of the nonlinear dynamics of such low-dimensionally chaotic systems may be exploited to gain a very effective control of them.

ACKNOWLEDGEMENTS

We are indebted to the Chemicals and Pharmaceuticals Directorate of the BBSRC for financial support of this work. We thank Drs Ph Groeneveld and Henk van Verseveld for a gift of *K. marxianus* and Professor David Peel for carrying out the autoregressive modelling.

REFERENCES

- Aarnio, T.H., Suihko, M.L., and Kauppinen, V.S. 1991 Isolation of Acetic Acid-Tolerant Baker's Yeast Variants in a Turbidostat. *Appl. Biochem. Biotechnol.* **27**, 55-63.
- Abarbanel, H.D.I., Brown, R. and Kennel, M.B. 1992 Local Lyapunov Exponents Computed from Observed Data. *J. Nonlinear Sci.* **2**, 343-365.
- Abarbanel, H.D.I., Brown, R., Sidorowich, J.J. and Tsimring, L. Sh. 1993 The Analysis of Observed Chaotic Data in Physical Systems. *Rev. Mod. Phys.* **65**, 1331-1392.
- Alexander, M.A. and Jeffries, T.W. 1990 Respiratory Efficiency and Metabolite Partitioning as Regulatory Phenomena in Yeasts. *Enz. Micr. Technol.* **12**, 2-19.
- Alexandre, H., Rousseaux, I. & Charpentier, C. 1993 Ethanol adaptation mechanisms in *Saccharomyces cerevisiae*. *Biotechnol. Appl. Biochem.* **20**, 173-183.
- Anderson, P.A. 1953 Automatic Recording of the Growth Rates of Continuously Cultured Microorganisms. *J. Gen. Physiol.* **36**, 733-777.
- Anderson, P.A. 1956 Continuous Recording of the Growth of Microorganisms under Turbidostatic and Chemostatic Control. *Rev. Sci. Instrum.* **27**, 48-51.
- Auberson, L.C.M., Kanbier, T. and von Stockar, U. 1993 Monitoring Synchronised Yeast Cultures by Calorimetry. *J. Biotechnol.* **29**, 205-215.
- Austin, G.D., Watson, R.W.J. and D'Amore, T. 1994 Studies of On-line Viable Yeast Biomass with a Capacitance Biomass Sensor. *Biotechnol. Bioeng.* **43**, 337-341.

Beving, H., Eriksson, L.E.G., Davey, C.L., and Kell, D.B. 1994 Dielectric Properties of Human Blood and Erythrocytes at Radio-Frequencies 0.2-10 MHz ; Dependence on Medium Composition. *Eur. J. Biophys.* **23**, 207-215.

Boulton, C.A., Maryan, P.S., and Loverage, D. 1989 The Application of a Novel Biomass Sensor to the Control of Yeast Pitching Rate. *Proc. 22nd European Brewing Convention, Zurich* 653-661.

Box, G.E.P. and Pierce, D.A. (1970) Distribution of residual autocorrelations in autoregressive-integrated moving average time series models. *J. Amer. Stat. Assoc.* **65**, 1509-1526.

Brown, R., Bryant, P. and Abarbanel, H.D. 1991 Computing the Lyapunov Spectrum of a Dynamical System from an Observed Time Series. *Phys. Rev. A* **43**, 2787-2806.

Brown, S.W. and Oliver, S.G. 1982 Isolation of Ethanol-Tolerant Mutants of Yeast by Continuous Selection. *Eur. J. Appl. Microbiol. Biotechnol.* **16**, 119-122.

Bruce, L.J., Axford, D.B., Ciszek, B. & Daugulis, A.J. 1991 Extractive fermentation by *Zygomonas mobilis* and the control of oscillatory behavior. *Biotechnol. Lett.* **13**, 291-296.

Bryson, V. and Szybalski, W. 1952 Microbial Selection. *Science* **116**, 45-51.

Bungay, H.R., Clesceri, L.S., and Adrianis, N.A. 1981 Auto-selection of Very Rapidly Growing Microorganisms. *Adv. Biotechnol.* **1**, 235-241.

Casdagli, M. 1989 Nonlinear Prediction of Chaotic Time-Series. *Physica D* **35**, 335-356.

Cerckel, I., Garcia, A., Degouys, V., Dubois, D., Fabry, L. & Miller, A.O.A. 1993 Dielectric spectroscopy of mammalian cells. 1. Evaluation of the biomass of HeLa- and CHO cells in suspension by low-frequency dielectric spectroscopy. *Cytotechnol.* **13**, 185-193

Chen, C.I., McDonald, K.A., and Bisson, L. 1990a Oscillatory Behaviour of *Saccharomyces cerevisiae* in Continuous Culture: I Effects of pH and Nitrogen Levels. *Biotechnol. Bioeng.* **36**, 19-27.

Chen, C., McDonald, K.A., and Bisson, L. 1990b Oscillatory Behaviour of *Saccharomyces cerevisiae* in Continuous Culture: II Analysis of Cell Synchronization and Metabolism. *Biotechnol. Bioeng.* **36**, 28-38.

Clarke, D.J., Blake-Coleman, B.C., Carr, R.J.G., Calder, M.R. and Atkinson, T. 1986 Monitoring Reactor Biomass. *Trends Biotechnol.* **4**, 173-178.

Cole, K.S. and Cole, R.H. 1941 Dispersion and Absorption in Dielectrics. 1. Alternating Current Characteristics. *J. Chem. Phys.* **9**, 341-351.

Cunningham, A. and Nisbet, R.M. 1983 Transients and Oscillations in Continuous Culture. In *Mathematics in Microbiology*, ed. M. Bazin. 77-103. London: Academic Press.

Davey, C.L. 1993a *The Biomass Monitor Source Book*. Aberystwyth: Aber Instruments.

Davey, C.L. 1993b *The Theory of the β -dielectric Dispersion and its use in the Estimation of Cellular Biomass*. Aberystwyth: Aber Instruments.

Davey, C.L. and Kell, D.B. 1994 The Low-Frequency Dielectric Properties of Biological Cells. In *Bioelectrochemistry of Cells and Tissues*, ed. H. Berg and G. Milazzo. Birkhäuser Verlag, Geneva, in the press.

Davey, C.L., Markx, G.H., and Kell, D.B. 1990 Substitution and Spreadsheet Methods for Analysing Dielectric Spectra of Biological Systems. *Eur. Biophys. J.* **18**, 255-265.

Davey, C.L., Peñaloza, W., Kell, D.B., and Hedger, J.N. 1991 Real-Time Monitoring of the Accretion of *Rhizopus oligosporus* Biomass During the Solid-Substrate Tempe Fermentation. *World J. Microbiol. Biotechnol.* **7**, 248-259.

Davey, C.L., Davey, H.M., and Kell, D.B. 1992 On the Dielectric Properties of Cell Suspensions at High Volume Fractions. *Bioelectrochem. Bioenerg.* **28**, 319-330.

Davey, C.L., Markx, G.H., and Kell, D.B. 1993 On the Dielectric Method of Monitoring Cellular Viability. *Pure Appl. Chem.* **65**, 1921-1926.

Degn, H. and Harrison, D.E.F. 1969 Theory of Oscillations of Respiration Rate in Continuous Culture of *Klebsiella aerogenes*. *J. Theoret. Biol.* **22**, 238-248.

Degouys, V., Cerckel, I., Garcia, A., Harfield, J., Dubois, D., Fabry, L. & Miller, A.O.A. 1993 Dielectric spectroscopy of mammalian cells. 2. Simultaneous *in situ* evaluation by aperture impedance pulse spectroscopy and low-frequency dielectric spectroscopy of the biomass of HTC cells on Cytodex 3. *Cytotechnol.* **13**, 195-202

Ditto, W.L., Rauseo, S.N. and Spano, M.L. 1990 Experimental Control of Chaos. *Phys. Rev. Lett.* **65**, 3211-3214.

Eckmann, J.-P. and Ruelle, D. 1985 Ergodic Theory of Chaos and Strange Attractors. *Rev. Mod. Phys.* **57**, 617-656.

Edmonds, A.N., Burkhardt D. and Adjei O. 1994 *Simultaneous prediction of multiple financial time series using Supervised Learning and Chaos Theory*. Proceedings of the IEEE WCCI ICNN Orlando, June 1994. IEEE New York.

Farmer, J.D. and Sidorowich, J.J. 1987 Predicting Chaotic Attractors. *Phys. Rev. Lett.* **59**, 845-848.

Fehrenbach, R., Comberbach, M., and Pêtre, J.O. 1992 On-line Biomass Monitoring by Capacitance Measurement. *J. Biotechnol.* **23**, 303-314.

Ferris, L.E., Davey, C.L., and Kell, D.B. 1990 Evidence from its Temperature Dependence that the β -dielectric Dispersion of Cell Suspensions is not due Solely to the Charging of a Static Membrane Capacitance. *Eur. Biophys. J.* **18**, 267-276.

Foster, K.R. and Schwan, H.P. 1986 Dielectric Properties of Tissues. In *CRC Handbook of Biological Effects of Electromagnetic Fields*, ed. C. Polk and E. Postow. Boca Raton, FL: CRC Press.

Fraleigh, S.P., Bungay, H.R. and Clesceri, L. 1989 Continuous Culture, Feedback Control and Auxostats. *Trends Biotechnol.* **7**, 159-164.

Fraleigh, S.P., Bungay, H.R., and Clesceri, L.S. 1990 Aerobic Formation of Ethanol by *Saccharomyces cerevisiae* in a Computerized pHauxostat. *J. Biotechnol.* **13**, 61-72.

Garfinkel, A., Spano, M.L., Ditto, W.L. and Weiss, J.N. 1992 Controlling Cardiac Chaos. *Science* **257**, 1230-1235.

Grassberger, P. and Procaccia, I. 1983 Characterization of Strange Attractors. *Phys. Rev. Lett.* **50**, 346-349.

Harris, C.M. and Kell, D.B. 1985 The Estimation of Microbial Biomass. *Biosensors* **1**, 17-84.

Harris, C.M., Todd, R.W., Bungard, S.J., Lovitt, R.W., Morris, J.G., and Kell, D.B. 1987 The Dielectric Permittivity of Microbial Suspensions at Radio-Frequencies: A Novel Method for the Estimation of Microbial Biomass. *Enzyme Microbial Technol.* **9**, 181-186.

Harrison, D.E.F. 1970 Undamped Oscillations of Pyridine Nucleotide and Oxygen Tension in Chemostat Cultures of *Klebsiella aerogenes*. *J. Cell Biol.* **45**, 514-521.

- Herbert, D. 1958 Some Principles of Continuous Culture. In *Recent Progress in Microbiology*, ed. G. Tunevall. Oxford: Blackwell Scientific Publications.
- Holton, D. & May, R.M. 1993 Distinguishing chaos from noise. In *The Nature of Chaos*, ed. T. Mullin. Clarendon Press, Oxford, pp. 149-182.
- Hurst, H.E. 1951 Long-Term Storage of Reservoirs. *Trans. Amer. Soc. Civil Eng.* **116**, 770-808.
- Ingram, L.O. and Buttke, T.M. 1985 Effects of Ethanol on Microorganisms. *Adv. Microbial Physiol.* **25**, 253-300.
- Jones, R.P. 1990 Roles for Replicative Deactivation in Yeast-Ethanol Fermentations. *CRC Crit. Rev. Biotechnol.* **10**, 205-222.
- Jones, R.P. and Greenfield, P.F. 1986 Role of Water Activity in Ethanol Fermentations. *Biotechnol. Bioeng.* **28**, 29- 40.
- Junker, B.H., Reddy, J., Gbewonyo, K. and Greasham, R 1994 Online and in-situ monitoring technology for cell-density measurement in microbial and animal cell cultures. *Bioprocess Eng.* **10**, 195-207.
- Käppeli, O. 1986 Regulation of Carbon Metabolism in *Saccharomyces cerevisiae* and Related Yeasts. *Adv. Micr. Physiol.* **28**, 181-209.
- Kell, D.B. 1987 The Principles and Potential of Electrical Admittance Spectroscopy: An Introduction. In: *Biosensors; fundamentals and applications*, ed. A.P.F.Turner, I.Karube and G.S. Wilson. pp. 427-468. Oxford University Press.

Kell, D.B. and Davey, C.L. 1992 On Fitting Dielectric Spectra Using Artificial Neural Networks. *Bioelectrochem. Bioenerg.* **28**, 425-434.

Kell, D.B., Samworth, C.M., Todd, R.W., Bungard, S.J., and Morris, J.G. 1987 Real-Time Estimation of Microbial Biomass During Fermentations using a Dielectric Probe. *Studia Biophysica* **119**, 153-156.

Kell, D.B., Markx, G.H., Davey, C.L. and Todd, R.W. 1990 Real-time Monitoring of Cellular Biomass: Methods and Applications. *Trends Anal. Chem.*, **9**, 190-194.

Kell, D.B., Ryder, H.M., Kaprelyants, A.S., and Westerhoff, H.V. 1991 Quantifying Heterogeneity: Flow Cytometry of Bacterial Cultures. *Ant. van Leeuwenhoek* **60**, 145-158.

Kennel, M.B. 1992 *The Multiple Dimensions Mutual Information Program*. Available by anonymous ftp from lyapunov.ucsd.edu.

Kennel, M.B. and Isabelle, S. 1992 Method to Distinguish Possible Chaos From Colored Noise and to Determine Embedding Parameters. *Phys. Rev. A*. **46**, 3111-3118.

Kennel, M.B., Brown, R. and Abarbanel H. 1992 Determining Embedding Dimension for Phase Space Reconstruction using a Geometrical Construction. *Physical Review A*, **45**, 3403-3411.

Lapedes, A. and Farber, R. 1987 Nonlinear Signal Processing Using Neural Networks: Prediction and Signal Modeling. Preprint, Los Alamos National Laboratory, Prprint LA-UR-97-2662.

Lloyd, A.L. and Gravenor, M.B. 1994 Linear Filters and Nonlinear Forecasting. *Proc. R. Soc B*, **256**, 157-161.

Lloyd, D. 1993 ed. *Flow Cytometry in Microbiology*. London: Springer-Verlag.

Locher, G., Hahnemann, U., Sonnleitner, B. and Fiechter, A. 1993a Automatic Bioprocess Control. 4. A Prototype Batch of *Saccharomyces cerevisiae*. *J. Biotechnol.* **29**, 57-74.

Locher, G., Hahnemann, U., Sonnleitner, B. and Fiechter, A. 1993b Automatic Bioprocess Control. 5. Biologically and Technically Caused Effects during Cultivation. *J. Biotechnol.* **29**, 75-89.

Markus, M., Kuschmitz, D., and Hess, B. 1985 Properties of Strange Attractors in Yeast Glycolysis. *Biophys. Chem.* **22**, 95-105.

Markx, G.H. and Kell, D.B. 1990 Dielectric Spectroscopy as a Tool for the Measurement of the Formation of Biofilms and of their Removal by Electrolytic Cleaning Pulses and Biocides. *Biofouling* **2**, 211-227.

Markx, G.H. and Kell, D.B. 1995 The use of dielectric permittivity for the control of the biomass level during biotransformations of toxic substrates in continuous culture. *Biotechnology Progress* **11**, 64-70.

Markx, G.H., Davey, C.L., and Kell, D.B. 1991a The Permittistat: a Novel Type of Turbidostat. *J. Gen. Microbiol.* **137**, 735-743.

Markx, G.H., Davey, C.L., and Kell, D.B. 1991b To what extent is the Magnitude of the Cole-Cole α of the β -dielectric Dispersion of Cell Suspensions Explicable in terms of the Cell Size Distribution? *Bioelectrochem. Bioenerg.* **25**, 195-211.

Markx, G.H., Davey, C.L., Kell, D.B., and Morris, P. 1991c The Dielectric Permittivity at Radio-Frequencies and the Bruggeman Probe: Novel Techniques for the On-line Determination of Biomass Concentrations in Plant Cell Cultures. *J. Biotechnol.* **20**, 279-290.

Markx, G.H., ten Hoopen, H.J.G., Meijer, J.J., and Vinke, K.L. 1991d Dielectric Spectroscopy as a Novel and Convenient Tool for the Study of the Shear Sensitivity of Plant Cells in Suspension Culture. *J. Biotechnol.* **19**, 145-148.

Martin, S.A. and Hempfling, W.P. 1976 A Method for the Regulation of Microbial Population Density During Continuous Culture at High Growth Rates. *Arch. Microbiol.* **107**, 41-47.

Mishima, K., Mimura, A., and Takahara, Y. 1991a On-line Monitoring of Cell Concentrations during Yeast Cultivation by Dielectric Measurements. *J. Ferment. Bioeng.* **72**, 296-299.

Mishima, K., Mimura, A., Takahara, Y., Asami, K., and Hanai, T. 1991b On-line Monitoring of Cell Concentrations by Dielectric Measurements. *J. Ferment. Bioeng.* **72**, 291-295.

Monod, J., 1950 La technique de culture continue. Théorie et applications. *Ann. Inst. Pasteur* **79**, 390-410.

Münch, T., Sonnleitner, B., and Fiechter, A. 1992a The Decisive Role of the *Saccharomyces cerevisiae* Cell Cycle Behaviour for Dynamic Growth Characterization. *J. Biotechnol.* **22**, 329-352.

Münch, T., Sonnleitner, B., and Fiechter, A. 1992b New Insights into the Synchronization Mechanism with Forced Synchronous Cultures of *Saccharomyces cerevisiae*. *J. Biotechnol.* **24**, 299-314.

Munson, R.J. 1970 Turbidostats. In *Methods in Microbiology*, Vol. 2, ed. J.R. Norris and D.W. Ribbons. 349-376. Academic Press.

- Myers, J. and Clark, L.B. 1944 Culture Conditions and the Development of the Photosynthetic Mechanism II. An Apparatus for the Continuous Culture of Chlorella. *J. Gen. Physiol.* **28**, 103-112.
- Northrop, J.H. 1954 Apparatus for Maintaining Bacterial Cultures in the Steady State. *J. Gen. Physiol.* **38**, 105-115.
- Novick, A. 1958 Experimentation with the Chemostat. In *Recent Progress in Microbiology*, ed. G. Tunevall. 403-415. Oxford: Blackwell.
- Novick, A. and Szilard, L. 1950 Experiments with the Chemostat on Spontaneous Mutations of Bacteria. *Proc. Natl. Acad. Sci.* **36**, 708-719.
- Ölz, R., Larsson, K., Larsson, C., Gnaiger, E., and Gustafsson, L. 1993 Regulation of Energy Flux of Yeast during Steady State and Oscillatory Growth. In *Modern Trends in Biothermokinetics*, ed. Schuster S. et al. 53-60. New York: Plenum.
- Ott, E., Grebogi, C. and Yorke, J.A. 1990 Controlling Chaos. *Phys. Rev. Lett.* **64**, 1196-1199
- Ott, E., Sauer, T, and Yorke, J.A. 1994 eds Coping with chaos. Analysis of chaotic data and the exploitation of chaotic systems. Wiley, New York.
- Peñaloza, W., Davey, C.L., Hedger, J.N., and Kell, D.B. 1991 Stimulation by Potassium Ions of the Growth of *Rhizopus oligosporus* During Liquid- and Solid-Substrate Fermentations. *World J. Microbiol. Biotechnol.* **7**, 260-268.
- Peñaloza, W., Davey, C.L., Hedger, J.N., and Kell, D.B. 1992 Physiological Studies on the Solid-state Quinoa Tempe Fermentation, Using On-line Measurements of Fungal Biomass Production. *J. Sci. Food. Agric.* **59**, 227-235.
- Peters, E.E. 1991 *Chaos and Order in the Capital Markets*. Wiley, New York.

Pethig, R. 1979 *Dielectric and Electronic Properties of Biological Materials*. Chichester: Wiley.

Pethig, R. and Kell, D.B. 1987 The Passive Electrical Properties of Biological Systems: Their Significance in Physiology, Biophysics and Biotechnology. *Phys. Med. Biol.* **32**, 933-970.

Petigen, H.-O., Jürgens, H., and Saupe, D. 1992 *Chaos and Fractals: New Frontiers of Science*. New York: Springer Verlag.

Porro, D., Martegani, E., Ranzi, B.M., and Alberghina, L. 1988 Oscillations in Continuous Cultures of Budding Yeast: A Segregated Parameter Analysis. *Biotechnol. Bioeng.* **32**, 411-417.

Provenzale, A., Smith, L.A., Vio, R. and Murante, G. 1992 Distinguishing Between Low-Dimensional Dynamics and Randomness in Measured Time-Series. *Physica D* **58**, 31-49.

Rapp, P.E. 1993 Chaos in the Neurosciences: Cautionary Tales from the Frontier. *Biologist* **40**, 89-94.

Richard, P., Teusink, B., Westerhoff, H.V., and van Dam, K. 1993 Around the Growth Phase Transition *S. cerevisiae*'s Make-up Favours Sustained Oscillations of Intracellular Metabolites. *FEBS Letters* **318**, 80-82.

Richard, P., Diderich, J.A., Bakker, B.M., Teusink, B., van Dam, K., and Westerhoff, H.V. 1994 Yeast Cells with a Specific Cellular Make-up and an Environment that Removes Acetaldehyde are Prone to Sustained Glycolytic Oscillations. *FEBS Letters* **341**, 223-226.

- Rieger, M., Käppeli, O. and Fiechter, A. 1983 The Role of Limited Respiration in the Incomplete Oxidation of Glucose by *Saccharomyces cerevisiae*. *J. Gen. Microbiol.* **129**, 653-661.
- Ruelle, D. 1980 *Chaotic evolution and strange attractors*, Cambridge University Press, p28
- Ruelle, D. 1990 Deterministic Chaos: the Science and the Fiction. *Proc. R. Soc. Ser. A* **427**, 241-248.
- Rutgers, M., Teixeira de Mattos, M.J., Postma, P.W. and van Dam, K. 1987 Establishment of the Steady State in Glucose-Limited Chemostat Cultures of *Klebsiella pneumoniae*. *J. Gen. Microbiol.* **133**, 445-453.
- Salter, G.J. and Kell, D.B. 1992 Rapid Determination, using Dielectric Spectroscopy, of the Toxicity of Organic Solvents to Intact Cells. In *Fundamentals of Biocatalysis in Non-conventional Media*, ed. J. Tramper, M.H. Vermüe, H.H. Beeftink, and U. von Stockar. 291-297. Amsterdam: Elsevier.
- Salter, G.J. and Kell, D.B. 1995 Solvent selection for whole cell biotransformations in organic media. *CRC Crit Rev. Bioechnol.*, in the press.
- Salter, G.J., Kell, D.B., Ash, L.A., Adams, J.F., Brown, A.J., and James, R. 1990 Hydrodynamic Deposition: a Novel Method of Cell Immobilization. *Enzyme Microb. Technol.* **12**, 419-430.
- Satroutdinov, A.D., Kuriyama, H., and Kobayashi, H. 1992 Oscillatory Metabolism of *Saccharomyces cerevisiae* in Continuous Culture. *FEMS Microb. Lett.* **98**, 261-268.
- Schiff, S.J., Jerger, K., Duong, D.H., Chang, T., Spano, M.L. & Ditto, W.L. 1994 Controlling chaos in the brain. *Nature* **370**, 615-620.

- Shapiro, H.M. 1994 *Practical Flow Cytometry 3rd Edition* New York: Wiley.
- Skinner, J.E. 1994 Low-Dimensional Chaos in Biological Systems. *Bio/Technology* **12**, 596-600.
- Sonnleitner, B. and Käppeli, O. 1986 Growth of *Saccharomyces cerevisiae* is Controlled by its Limited Respiratory Capacity - Formulation and Verification of a Hypothesis. *Biotechnol. Bioeng.* **28**, 927-937.
- Sonnleitner, B., Locher, G. and Fiechter, A 1992 Biomass Determination. *J. Biotechnol.* **25**, 5-22
- Stoicheva, N.G., Davey, C.L., Markx, G.H., and Kell, D.B. 1989 Dielectric Spectroscopy: A Rapid Method for the Determination of Solvent Biocompatibility During Biotransformations. *Biocatalysis* **2**, 245-255.
- Stone, I. 1992 Coloured Noise or Low-Dimensional Chaos. *Proc. R. Soc B* **250**, 77-81.
- Strässle, C., Sonnleitner, B. and Fiechter, A. 1988 A Predictive Model for the Spontaneous Synchronization of *Saccharomyces cerevisiae* Grown in Continuous Culture. I. Concept. *J. Biotechnol.* **7**, 299-318.
- Strässle, C., Sonnleitner, B. and Fiechter, A. 1989 A Predictive Model for the Spontaneous Synchronization of *Saccharomyces cerevisiae* Grown in Continuous Culture. II. Experimental Verification. *J. Biotechnol.* **9**, 191-208.
- Sugihara, G. and May, R.M. 1990 Non-linear Forecasting as a way of Distinguishing Chaos from Measurement Error in Time Series. *Nature* **344**, 734-741.
- Sugihara, G., Grenfell, B., and May, R.M. 1990 Distinguishing Error from Chaos in Ecological Time Series. *Phil. Trans. R. Soc. Lond. B* **330**, 235-251.

Takens, F. 1981 *Dynamical Systems & Turbulence*, Warwick 1980, ed. D.Rand and L. S. Young, *Lecture Notes in Mathematics* 898, 366-381. Springer Verlag, New York.

Tempest, D.W. 1970 *The Continuous Cultivation of Microorganisms. I. Theory of the Chemostat*. In *Methods in Microbiology, Vol 2*, ed. J.R. Norris and D.W. Ribbons. Academic Press

Theiler, J., Eubank, S., Longtin, A., Galdrikian, B. and Farmer, J.D. 1992 *Testing for Nonlinearity in Time-Series - the Method of Surrogate Data. Physica D* **58**, 77-94.

Tsonis, A.A. and Elsner, J.B. 1992 *Nonlinear Prediction as a way of Distinguishing Chaos from Random Fractal Sequences. Nature* **358**, 217-220.

Van Uden, N. 1989 *Alcohol Toxicity in Yeasts and Bacteria*. Boca Raton, Florida: CRC Press.

Watson, T.G. 1969 *Steady State Operation of a Continuous Culture at Maximum Growth Rate by Control of Carbon Dioxide Production. J. Gen. Microbiol.* **59**, 83-89.

Watson, T.G. 1972 *The Present Status and Future Prospects of the Turbidostat. J. Appl. Chem. Biotechnol.* **22**, 229-243.

Weigend, A.S. and Gershenfeld, N.A. 1994 *Time Series Prediction: Forecasting the Future and Understanding the Past*. Addison-Wesley, Reading, Massachusetts.

Wills, C. 1990 *Regulation of Sugar and Ethanol Metabolism in Saccharomyces cerevisiae. CRC Crit. Rev. Biochem. Mol. Biol.* **25**, 245-280.

Wilson, H.B. and Rand, D.A. 1993 *Detecting Chaos in a Noisy Time-Series. Proc. R. Soc. Ser. B*, **253**, 239-244.

Wolf, A., Swift, J.B., Swinney, H.L. and Vastano, J.A. 1985 Determining Lyapunov Exponents from a Time Series. *Physica* **16D**, 285-317.

Woodward, A.M. and Kell, D.B. 1990 On the nonlinear dielectric properties of biological systems. *Saccharomyces cerevisiae*. *Bioelectrochem. Bioenerg.* **24**, 83-100.

Ye, K., Jin, S. & Shimizu, K. 1994 Fuzzy neural network for the control of high cell density cultivation of recombinant *Escherichia coli*. *J. Ferment. Bioeng.* **77**, 663-673.

LEGENDS TO THE FIGURES.

Figure 1. Diagrammatic representation of the β -dispersion of cell suspensions. Polarisation of the cell membranes involves movement of ions and so it takes a finite time for charge separations to be induced. At low frequencies (**A**) the cells are maximally polarised, at medium frequencies (**B**) there are fewer charge separations, and at high frequencies (**C**) the cells are not polarised at all. The curve that describes this relationship is known as the β -dispersion (**D**). For clarity in **A-C** the charges are shown for just one field direction. The annotations are explained in the text.

Figure 2. The effect of increasing biomass concentrations (in $\text{mg wet weight.ml}^{-1}$) on the β -dispersion of a series of hypothetical cell suspensions of different biomass content (and in which their radius and the conductivities of the medium and cytoplasm are held constant).

Figure 3. The delta capacitance of a yeast culture during growth in a permittostat. Initially yeast were grown in batch and then permittostatic control of the biomass concentration was initiated at the time indicated by the arrow. The ΔC was estimated from dual-frequency measurements as described in the Materials and Methods and when it exceeded the setpoint (5 pF) medium was pumped in to dilute the yeast to the correct biomass. The steady-state biomass level was approximately 8 mg.ml^{-1} .

Figure 4. Time-dependent growth rate changes in a permittostat culture. Measurements were made as described in Materials and Methods. Each time the pump was switched on to control the biomass, the length of time the pump was on was recorded to a file. The volume of medium pumped per hour was then calculated, and these data points are displayed at hourly intervals. Three 400-hour blocks of data are shown: **A** 200-600 h, **B** 600-1000 h, **C** 1000-1400 h. The data presented are for the permittostat run shown in Figure 3.

Figure 5. Power spectrum of the medium-inflow data shown in Figure 4C. To minimise aliasing effects the raw data were mean filtered using a 5-point moving average, and power

spectra were obtained via the fast Fourier transform using a minimum 3-term Blackman-Harris window (see Kell 1987, Woodward & Kell 1990).

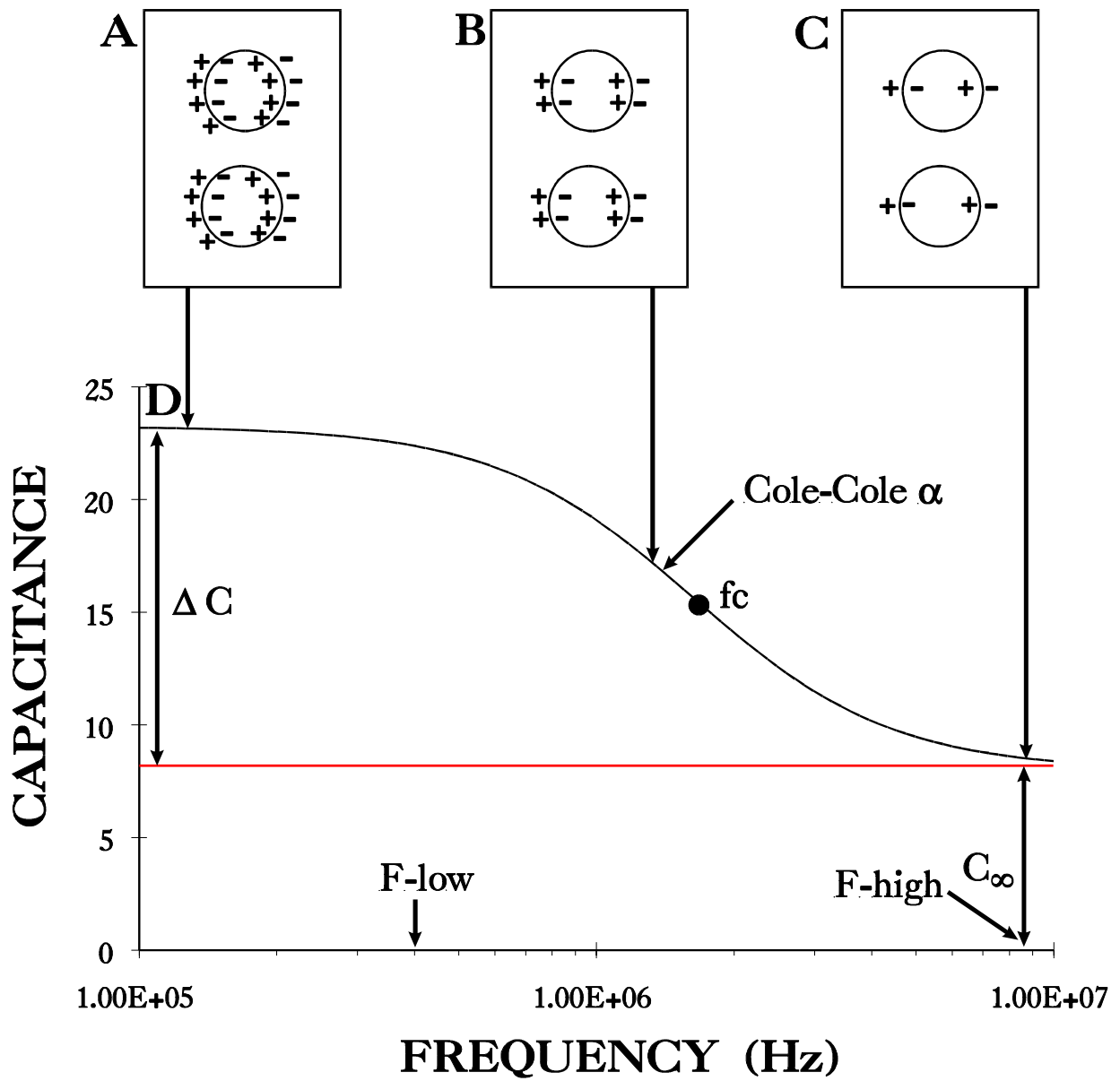
Figure 6. A permittistat culture exhibiting an essentially uniform pump rate throughout an extended period. Following the initial high pump rate when permittistatic control was initiated the amount of medium inflow required to maintain the setpoint was approximately constant. Measurements were made exactly as described for Figure 4, save that the setpoint was 4 pF.

Figure 7. Nonlinear time series analyses of growth rate data of yeast in a permittistatically controlled continuous culture. Growth rate measurements were performed as described in the legend to Fig 4 nonlinear predictions were carried out as described in the legend to Table 1. **A** Estimated volume (one-step-ahead predictions) of culture broth added per hour and actual volumes added vs time for the nonlinear predictor. **B.** Estimated volume of culture broth added per hour vs actual volumes added for the nonlinear predictor. The line shown is the best linear fit, and has a slope of 0.84 and an intercept of 2.84. **C** Estimated volume of culture broth added per hour vs actual volumes added for the nonlinear predictor. The line shown is the best linear fit, and has a slope of 0.45 and an intercept of 19.3. **D.** The effect of n on the correlation coefficient between estimated and actual data for n -step-ahead predictions of the same data, according to the Sugihara-May nonlinear prediction method.

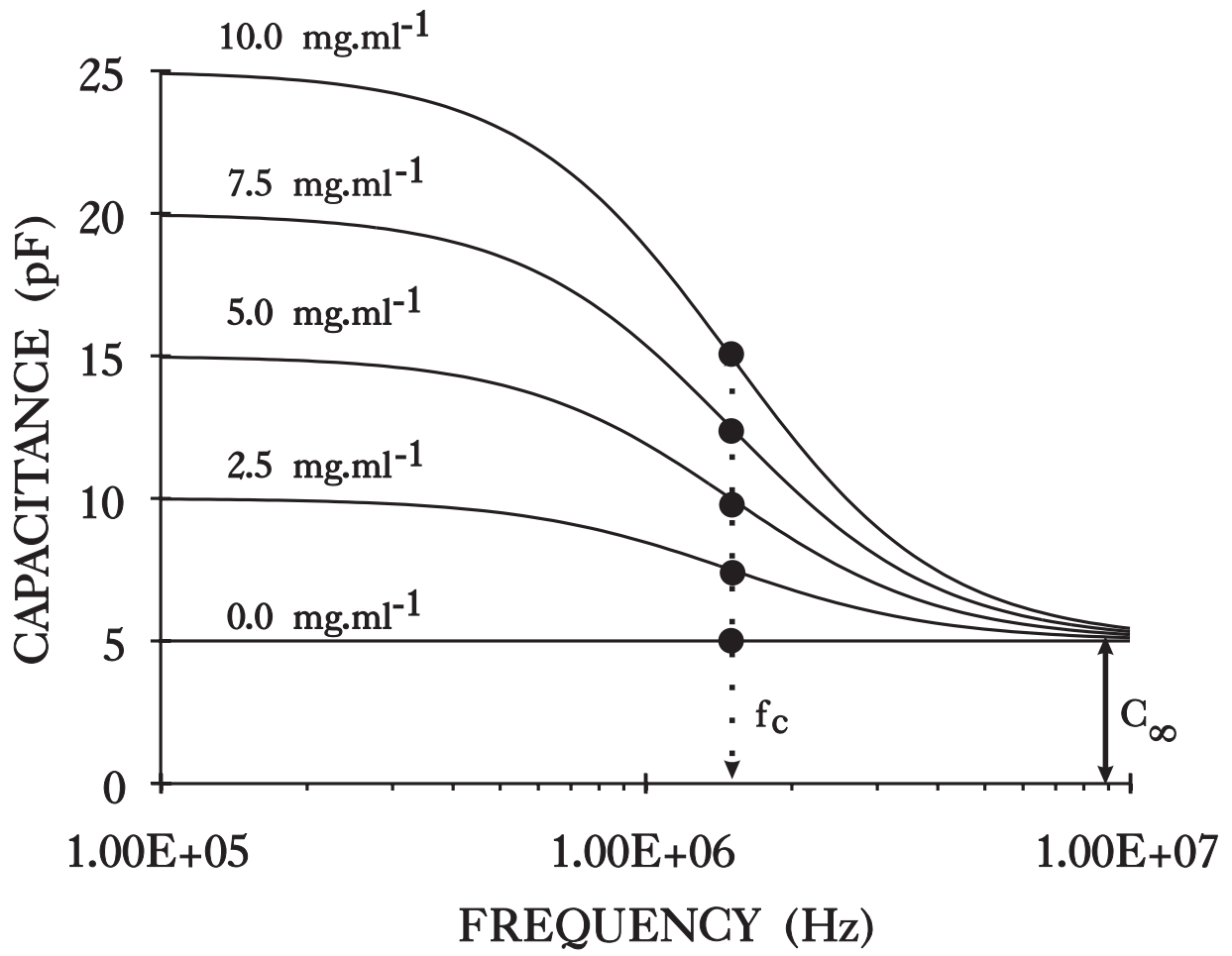
Figure 8. Short term changes in a permittistatic culture. **A)** The flow rate required to maintain the biomass at the setpoint was measured as described in the legend to Figure 4. For a ten-hour period a variable amount of medium input was required to maintain the setpoint, but over the next five hours the biomass in the permittistat never exceeded the setpoint and so no medium input occurred. **B)** Changes in the percentage of budding cells during the oscillation were reflected in the Cole-Cole α of the yeast suspension. Off-line scans and curve fitting for calculation of the Cole-Cole α were carried out as described in the text. An increase in both the budding index and the Cole-Cole α was seen during the phase of the oscillation where medium input was occurring and when medium input ceased the magnitude of both decreased. **C)** Changes in glucose concentration during the oscillation. Glucose concentration was measured as described in the Methods. During the period where medium inflow is occurring the glucose

concentration steadily increases, before beginning to fall again when medium input ceases.

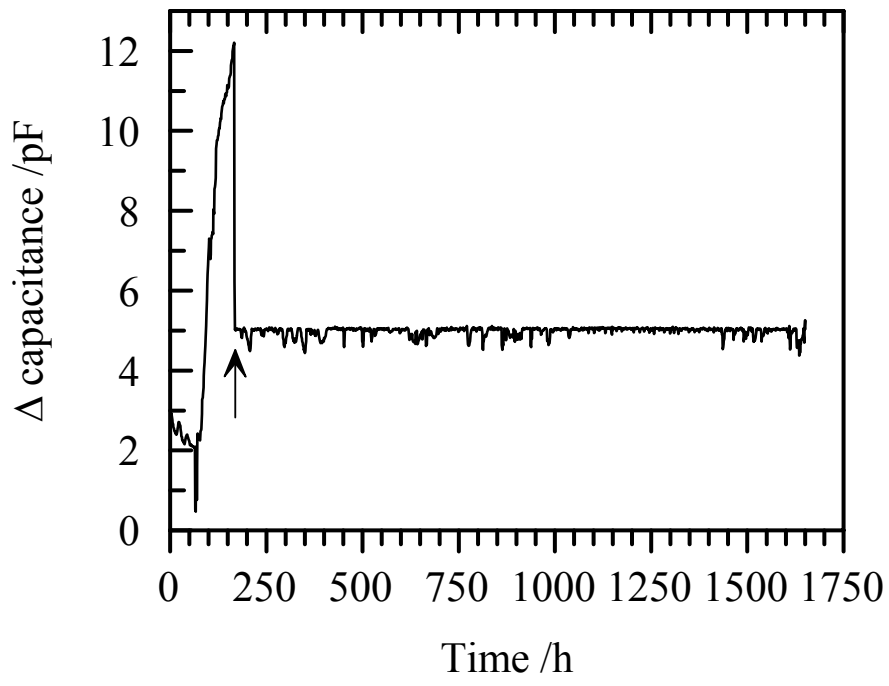
D) Changes in ethanol concentration during the oscillation. Ethanol concentration was measured as described in the Methods section. During the period of medium inflow the ethanol concentration remained quite stable; however when medium input ceased a transient increase in ethanol concentration was seen.



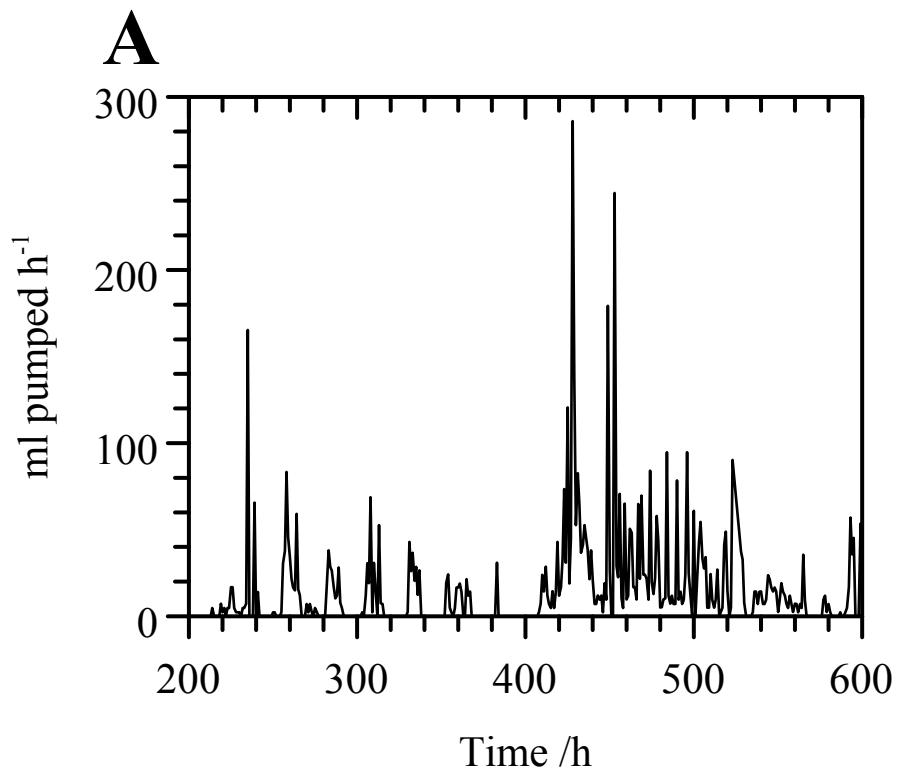
Davey *et al.*, 1995 Figure 1



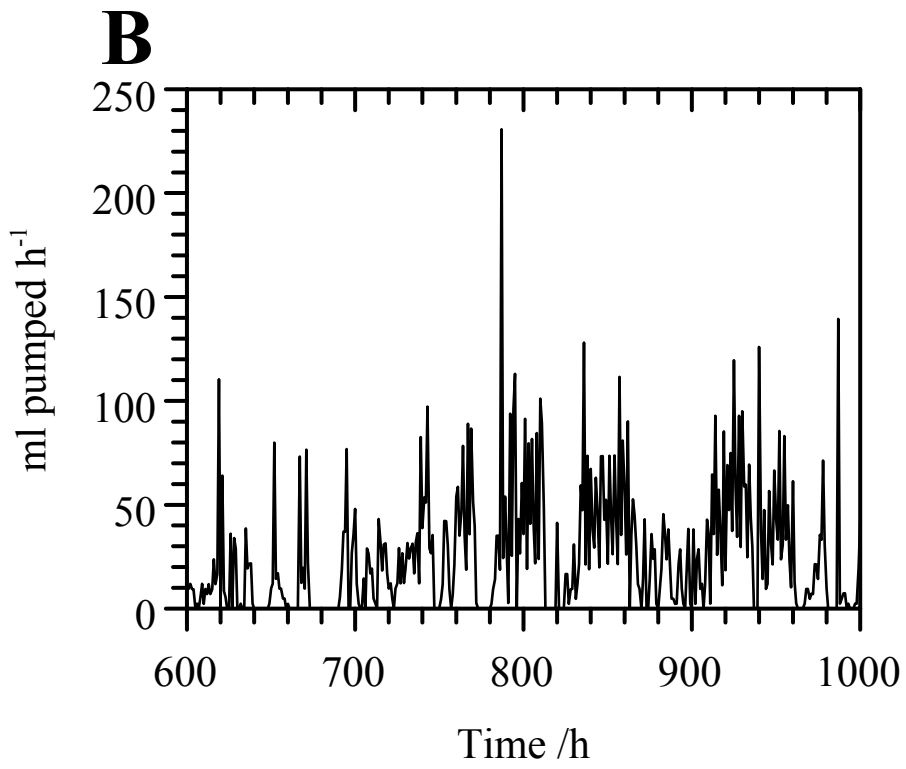
Davey *et al.*, 1995 Figure 2



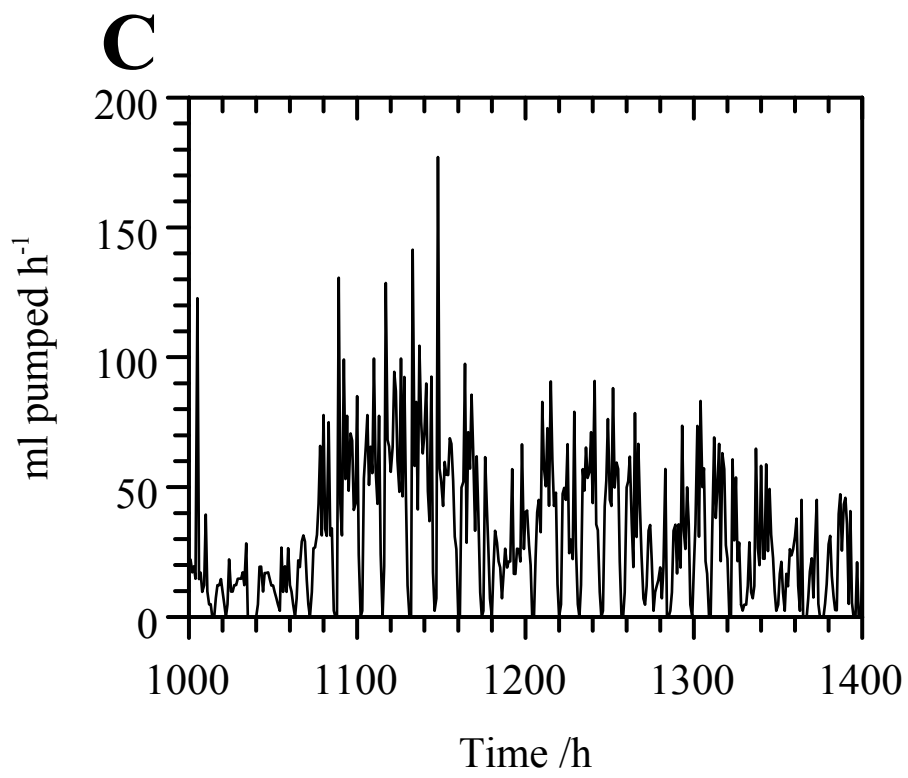
Davey *et al.*, 1995 Figure 3



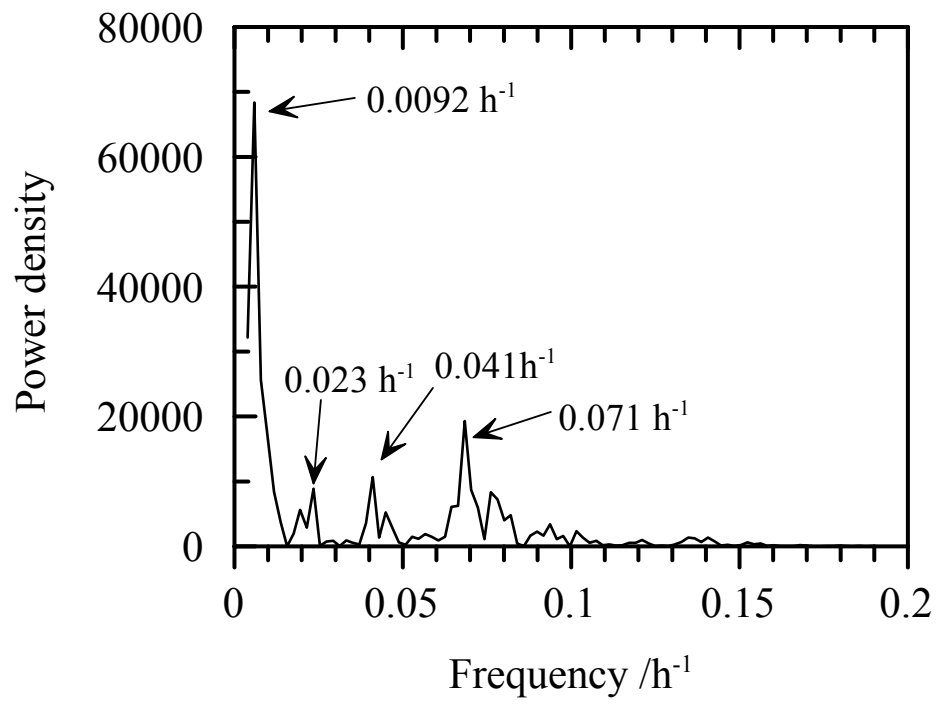
Davey *et al.*, 1995 Figure 4A



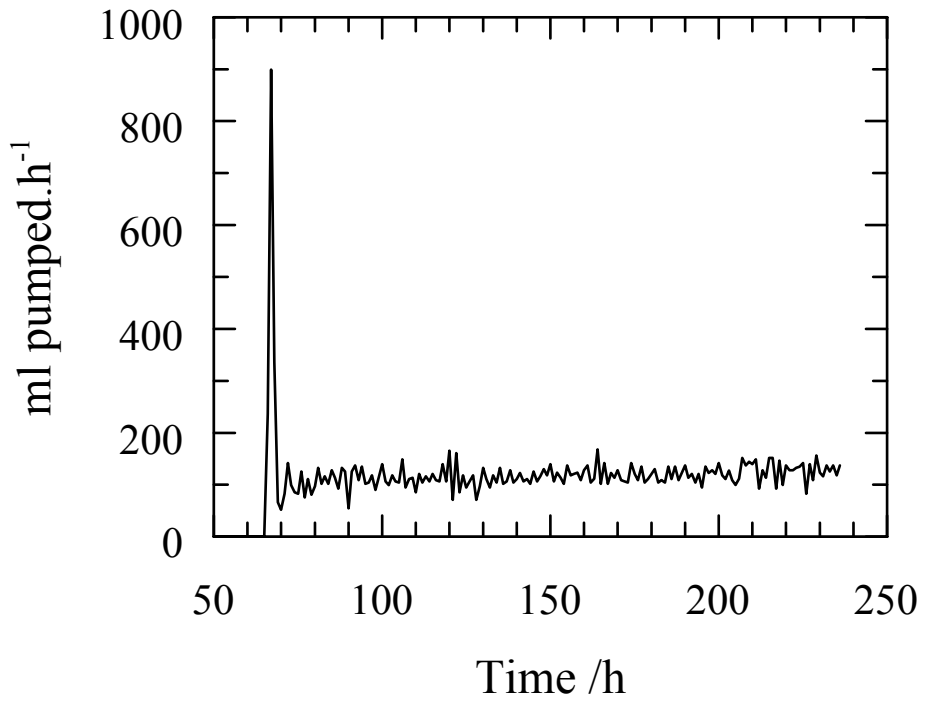
Davey *et al.*, 1995 Figure 4B



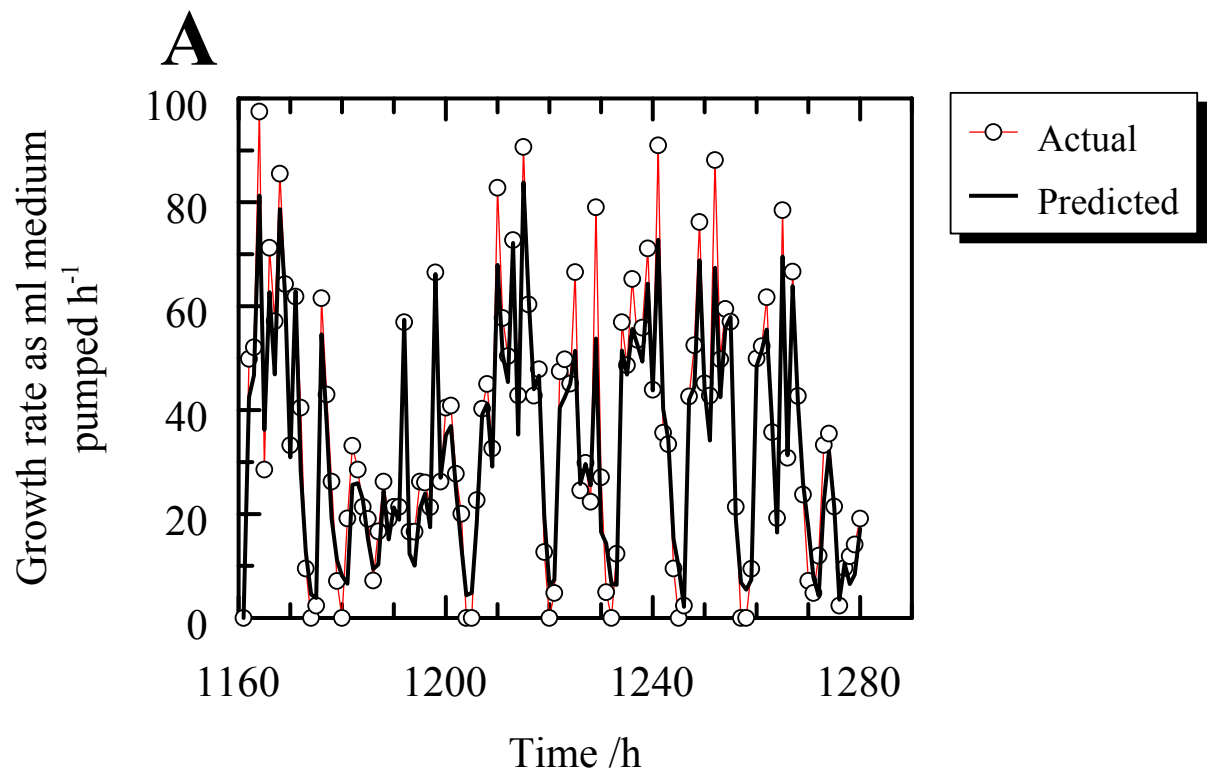
Davey *et al.*, 1995 Figure 4C



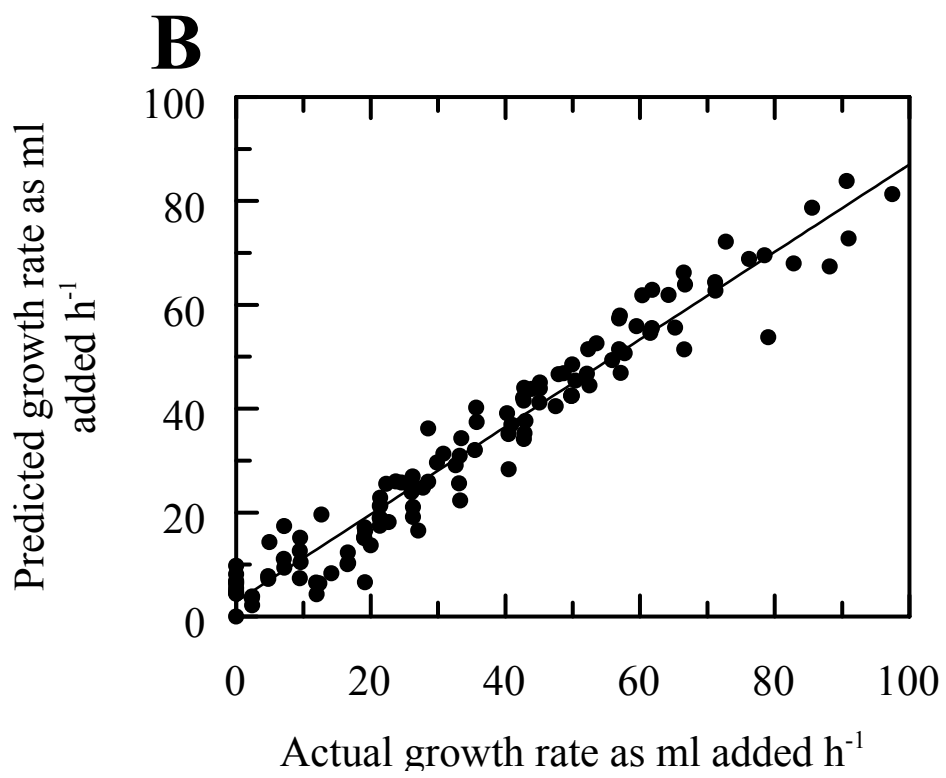
Davey *et al.*, 1995 Figure 5



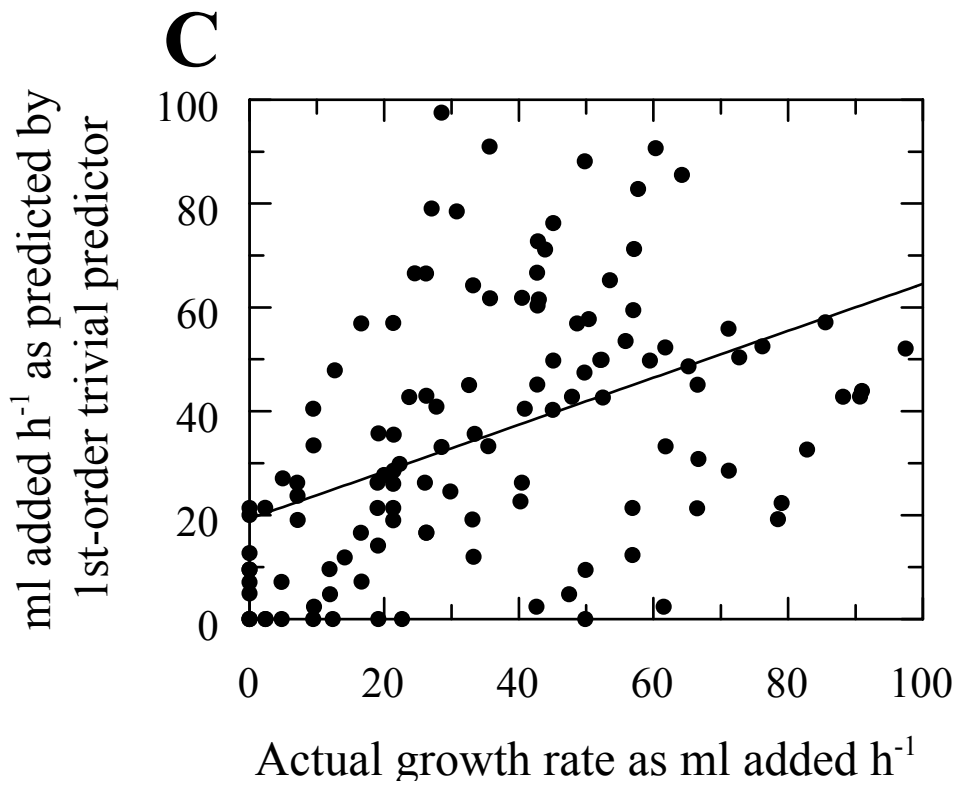
Davey *et al.*, 1995 Figure 6



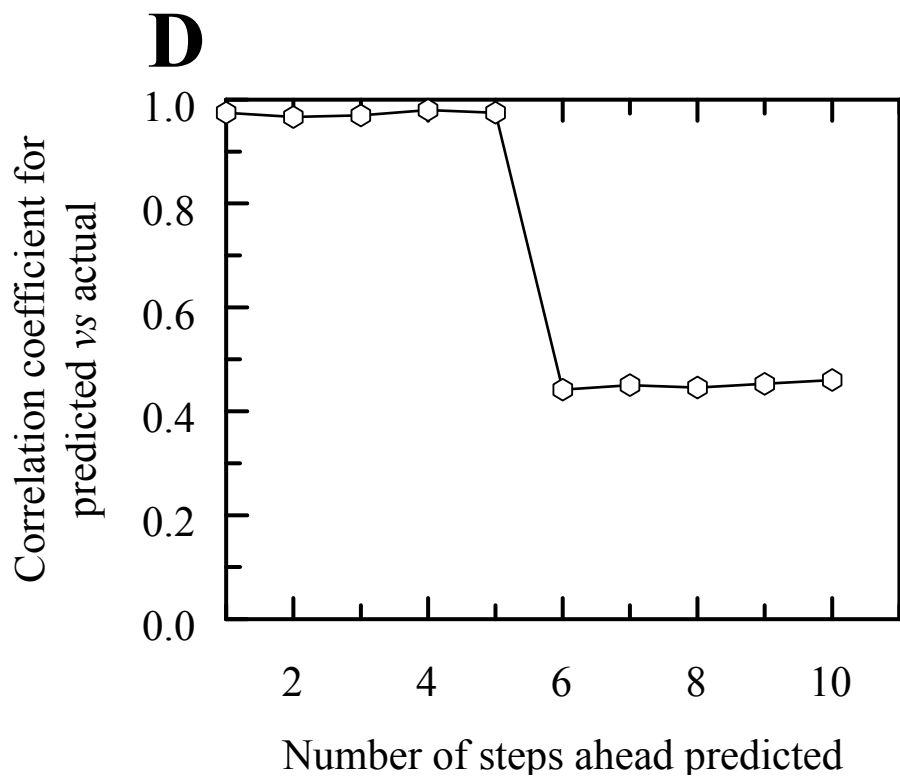
Davey *et al.*, 1995 Figure 7A



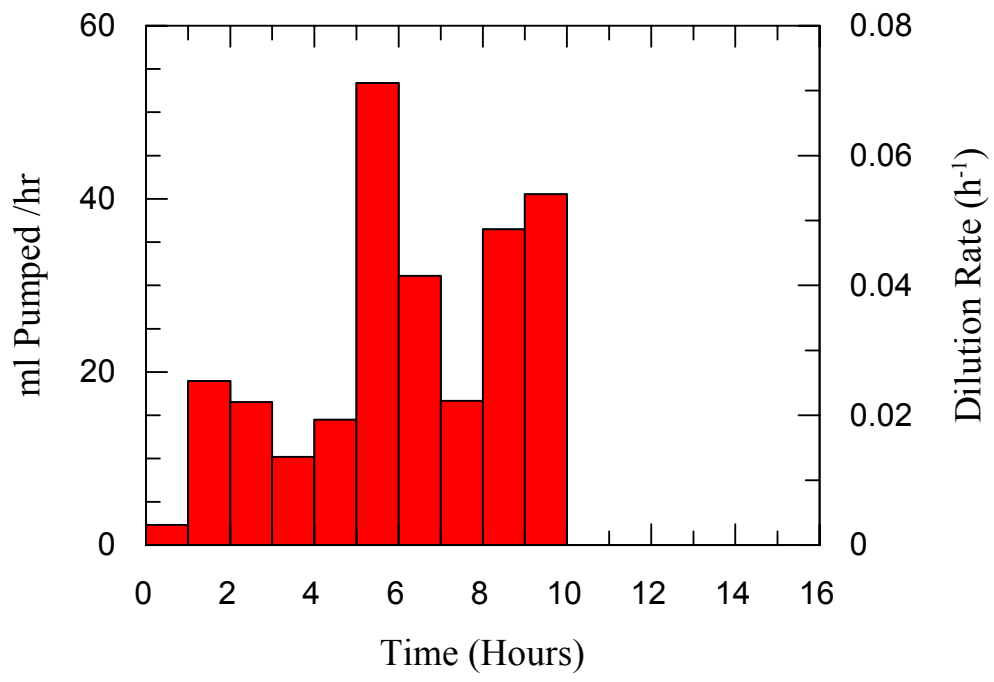
Davey *et al.*, 1995 Figure 7B



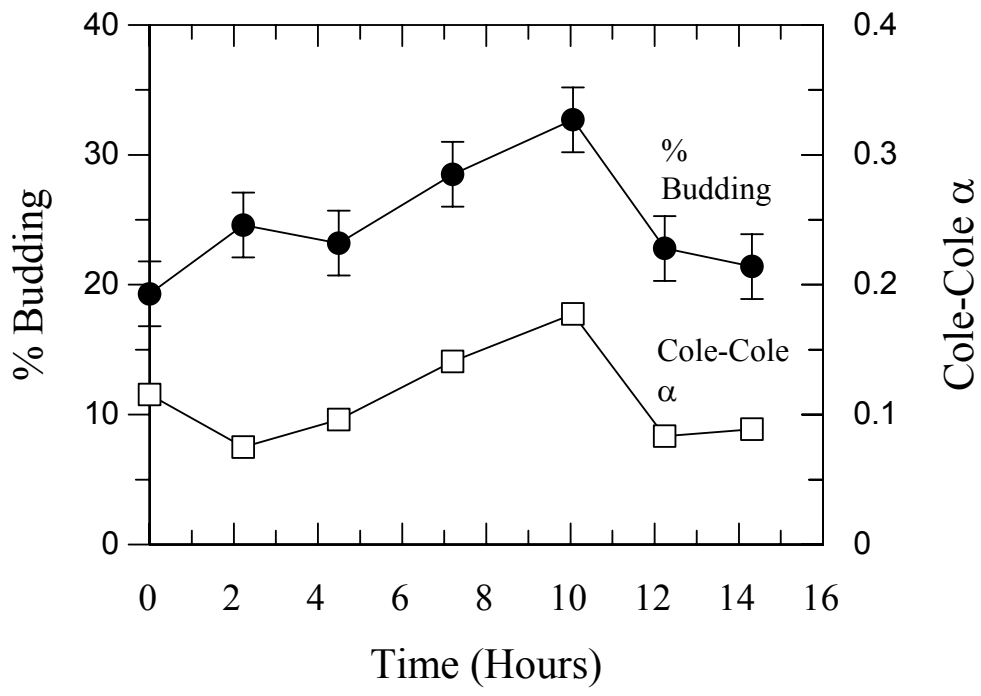
Davey *et al.*, 1995 Figure 7C



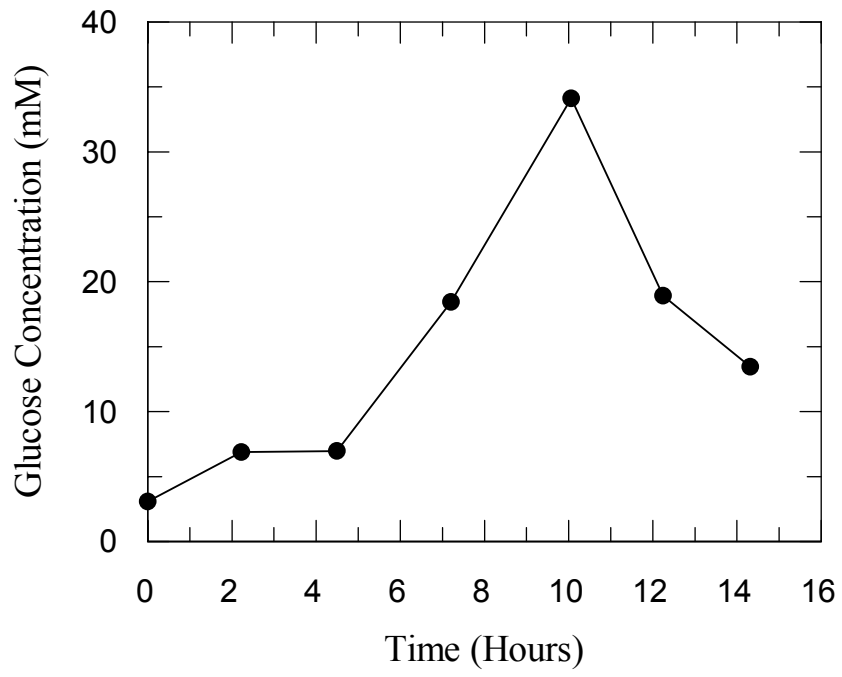
Davey *et al.*, 1995 Figure 7D



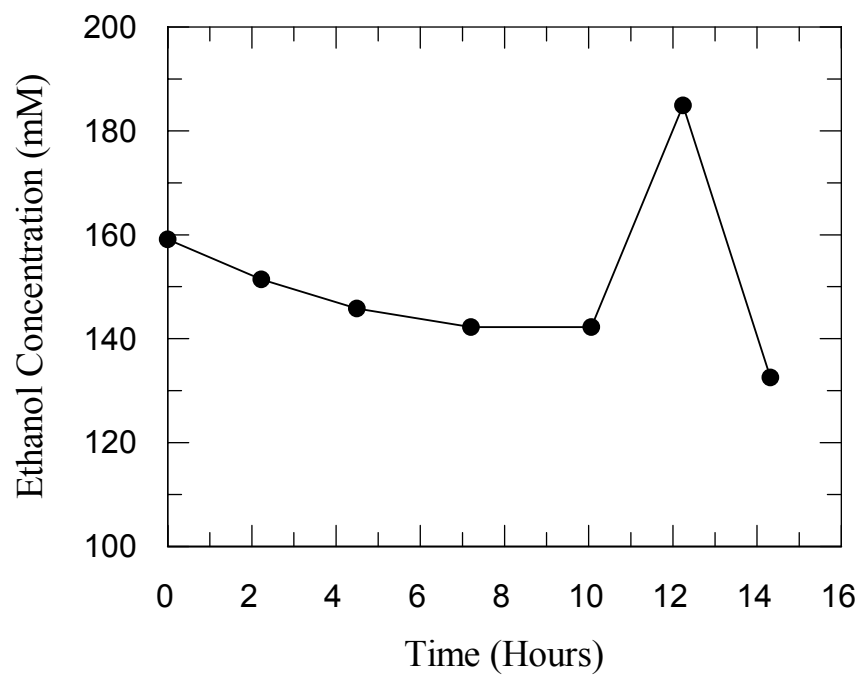
Davey *et al.*, 1995 Figure 8A



Davey *et al.*, 1995 Figure 8B



Davey *et al.*, 1995 Figure 8C



Davey *et al.*, 1995 Figure 8D

Times Series Data (Hours)	200-1400	200-600	600-1000	1000-1400
Lyapunov Exponent	0.510	0.316	0.147	0.510
Calculated minimum embedding dimension	5	10	8	5
Calculated minimum embedding separation	2	2	1	2
Hurst Exponent	0.755	0.680	0.747	0.773
Correlation coefficient predicted vs actual from Sugihara-May method	0.974	0.959	0.827	0.679
Correlation coefficient predicted vs actual from 1st-order trivial predictor	0.436	0.800	-0.050	0.214
Correlation coefficient predicted vs actual from 2nd-order trivial predictor	0.865	0.894	0.901	0.872
Correlation coefficient predicted vs actual from 6th order autoregressive model	0.219	-	-	-
RMS error of predictions vs actual from Sugihara-May method	6.749	8.38	17.65	13.44
RMS error of predictions vs actual from 1st- and 2nd-order trivial predictors	26.11	17.63	45.67	22.74
RMS error of predictions vs actual from 6th order autoregressive model	26.53	-	-	-
Average number of ml added during the prediction period	109.46	21.43	47.77	24.22

TABLE 1. Nonlinear time series analyses of growth rate data of yeast in a permissively controlled continuous culture. Measurements were performed as described in the legend to Fig 4. Lyapunov exponents were obtained numerically using the method described by Wolf *et al.*

(1985). Hurst exponents were determined as explained in Hurst (1951). The embedding dimension (and separation values) were determined according to the average auto-mutual information method described by Kennel *et al.*, 1992 (see also Kennel 1992, Abarbanel *et al.*, 1992, 1993). The fit to the nonlinear predictor was obtained as follows, using a methodology derived from the work of Sugihara and May (1990). The embedding dimension and separation values previously obtained were used to generate embedded vectors from the first 80% and last 10% of the relevant time series. A database of these vectors was formed and the exponential interpolation regime described by Sugihara and May was used to generate one-step-ahead predictions for the data points in the test set (the points between 80 and 90%) using nearest neighbours determined by Euclidean distance. The 1st-order trivial predictor is that in which the prediction for a given data point is the actual value of the previous data point whilst the 2nd-order trivial predictor is that in which the value of data point $n+2$ is that for point n plus twice the signed difference between points $n+1$ and n . Autoregressive models were performed using the TSP software (Quantitative Micro Software, Irvine, California); that of order 6 was found to give the best predictions. In the Sugihara-May and trivial predictor methods the inputs were the differences from the previous time series data points, but the RMS errors relate to the absolute values.